



PEFA

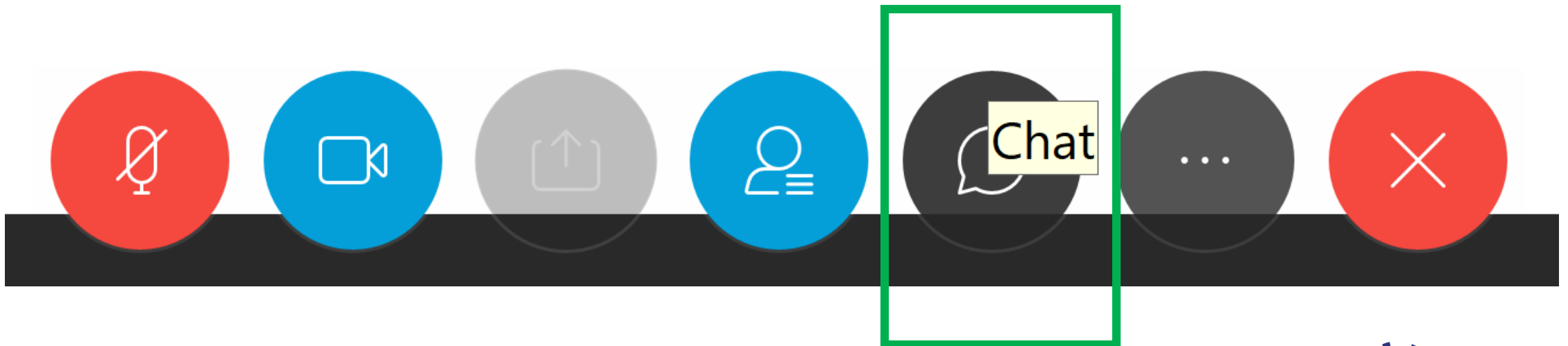
PEFA Supplementary Framework for Assessing Gender Responsive Public Financial Management

GLOBAL WEBINAR | May 14, 2020

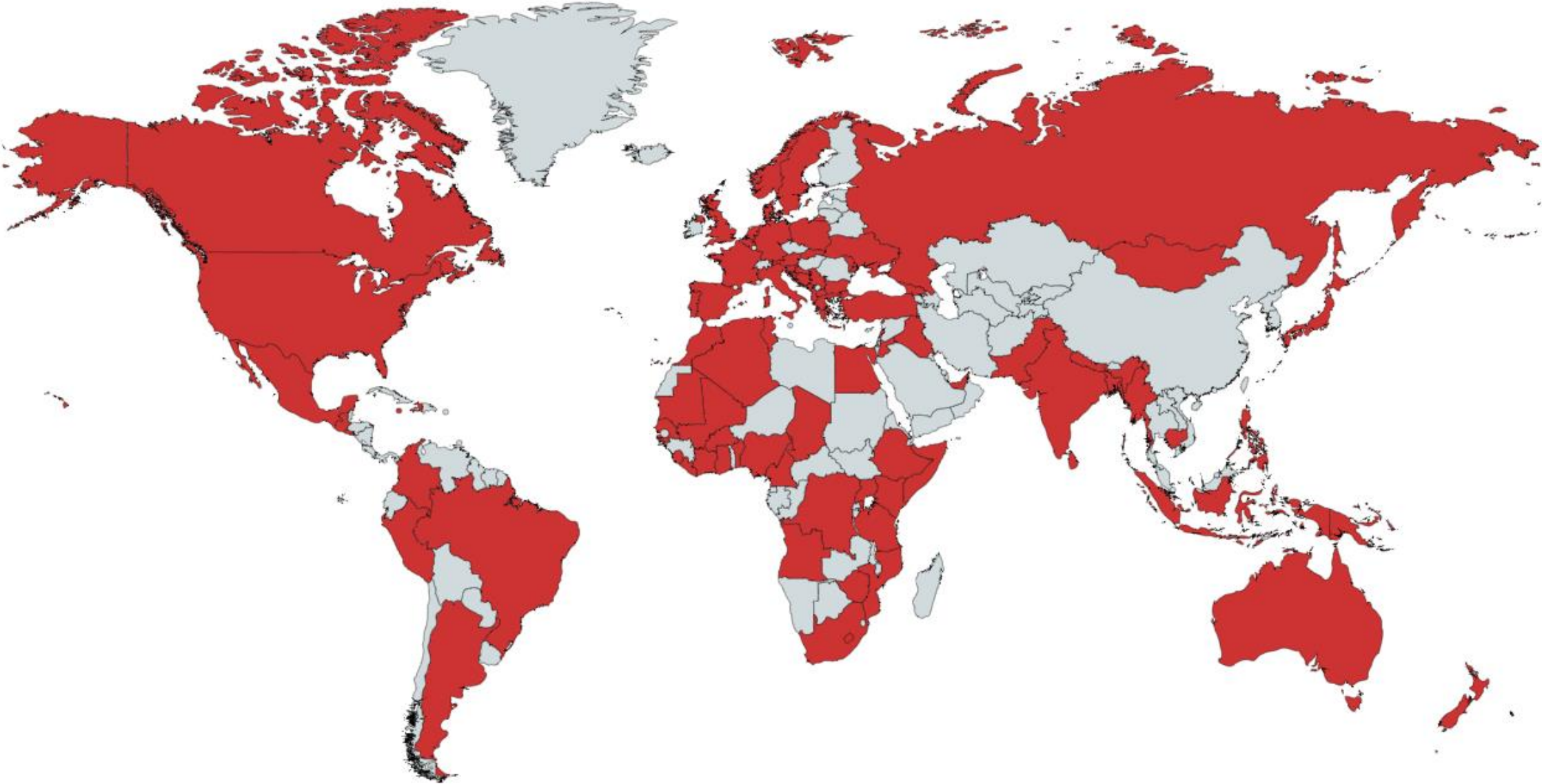
www.pefa.org
#PEFA #GRPFM

CHAT: What is gender responsive public financial management?

- Please go to CHAT function (bottom of your screen) and briefly describe **what gender responsive public financial management** means to you.
- Explain in just a few words. **No need for detail.**



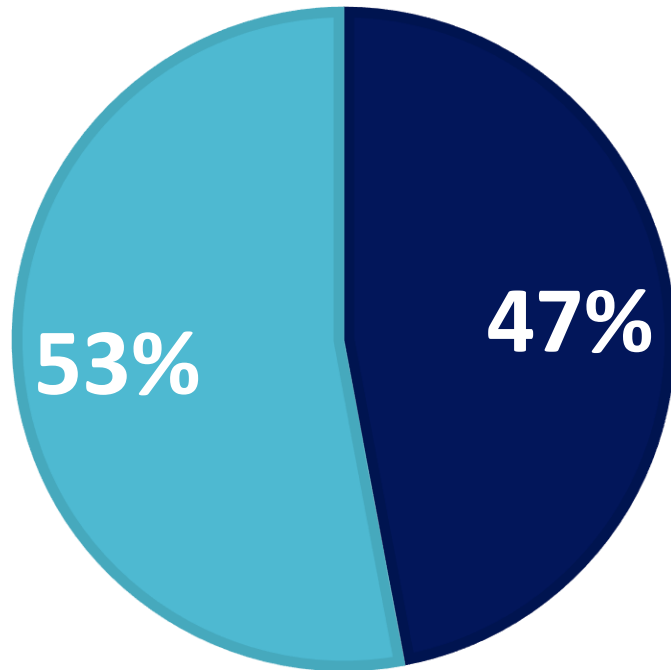
258 webinar registrations from around the world



258 registrations...

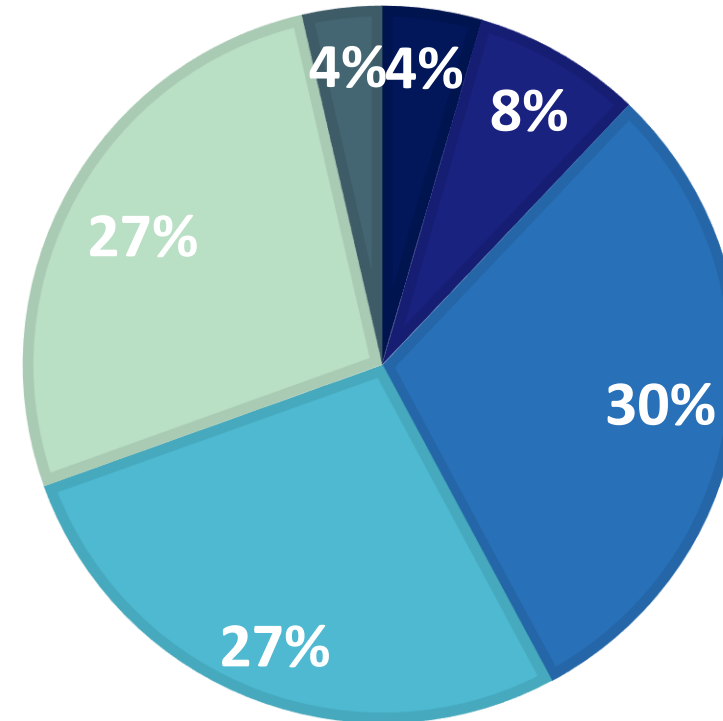
BY GENDER

■ Female ■ Male

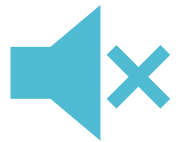


BY ORGANIZATION TYPE

- Academia
- Bilateral development organization
- Government
- Private sector
- Multilateral development organization
- Other



Let's agree to...



Mute your microphones



Type any questions in **chat**



Keep comments **brief** and focused

SPEAKERS



**Emeline
Bredy,**
World
Bank



**Maja
Bosnić,**
Niras



**Martin
Bowen,**
PEFA
Secretariat



**Romawaty
Sinaga,**
World
Bank



**Urška
Zrinski,**
PEFA
Secretariat

A little background...

- What is PEFA?



- Why is PEFA involved in gender responsive PFM?



The PEFA program

PARTNERSHIP PROGRAM

- Established in 2001
- Nine partners



THE GOVERNMENT
OF THE GRAND-DUCHY OF LUXEMBOURG
Ministry of Finance



The PEFA program

PARTNERSHIP PROGRAM

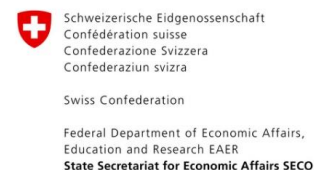
- Established in 2001
- Nine partners

METHODOLOGY

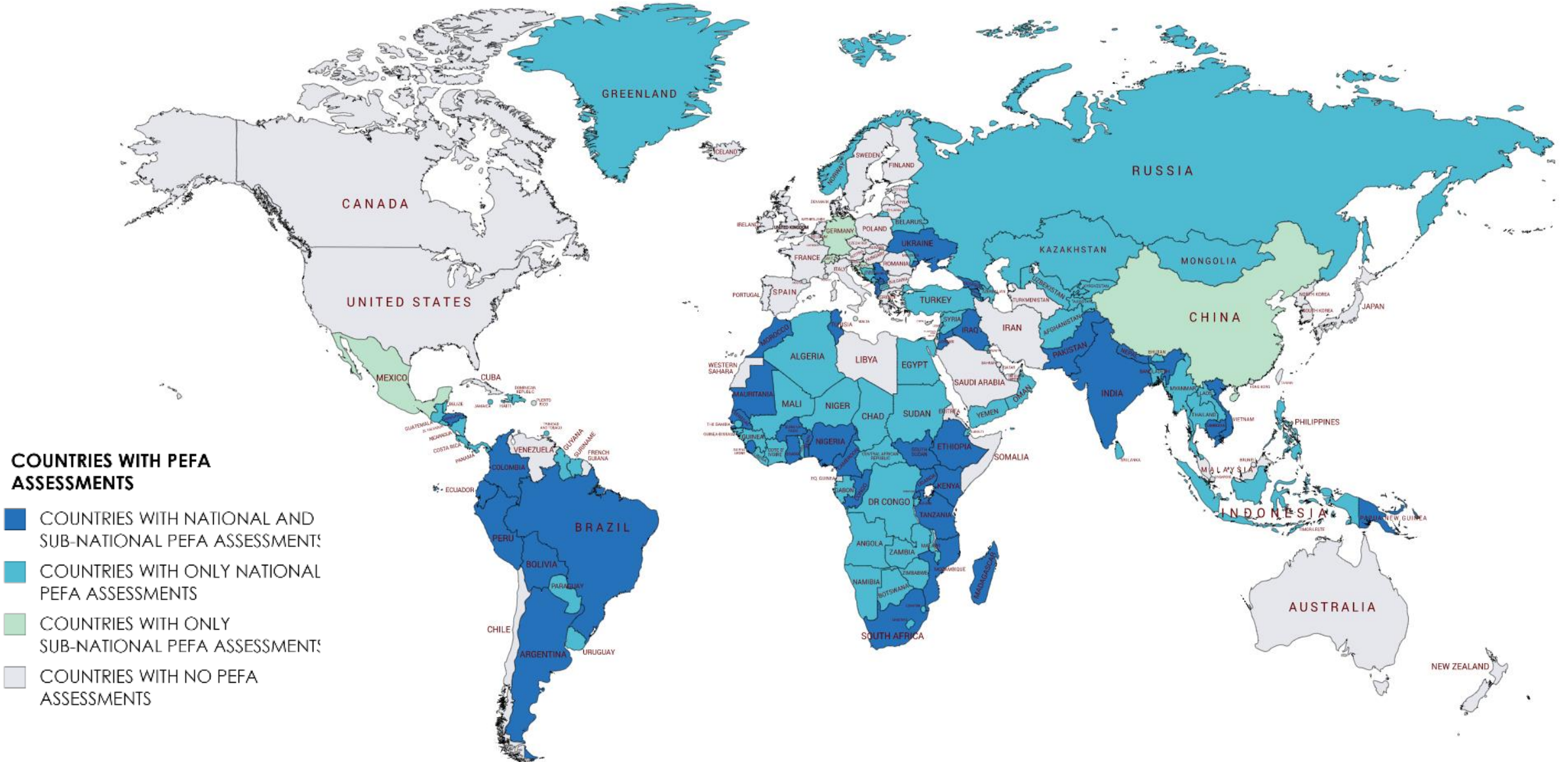
The PEFA program provides a standard methodology for assessing PFM—**PEFA framework**



THE GOVERNMENT
OF THE GRAND-DUCHY OF LUXEMBOURG
Ministry of Finance



Global use of PEFA



Why PEFA GRPFM framework?

PEFA 2016: PI-8 ON SERVICE DELIVERY

PI-8 references sex-disaggregated performance information as good practice.



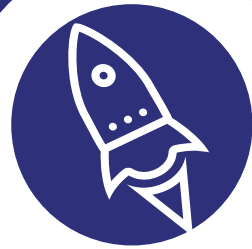
PUBLIC CONSULTATION ON PEFA 2016

Proposal to introduce the assessment of gender specific information in the budget process as part of PEFA.



CONTRIBUTION TO SDG 5.C.1 DESIGN

PEFA Secretariat was invited to help design the SDG indicator on GRB.



OFFICIAL LAUNCH OF PEFA 2016 IN BUDAPEST

During the session on future of PEFA, participants identified GRB as the priority area that could be assessed through alignment with PEFA.



COUNTRY REQUESTS TO ASSESS GRPFM

Zimbabwe (2018) is the first PEFA assessment report that includes information on GRB as part of PI-8.

Launch of PEFA Framework for Assessing Gender Responsive PFM

• January 23, 2020



PEFA
@PEFASecretariat

#PEFA is launching a new supplementary framework for assessing gender responsive #PFM #GenderEquality

The optional framework has been tested in seven countries

It has nine indicators across the #budget cycle

More at: bit.ly/2TJep7n




Guidance for Assessment Teams
PEFA Secretariat
Washington, DC
January 2020

Supplementary Framework for Assessing Gender Responsive Public Financial Management



LEARNING OBJECTIVES

At the end of this webinar you will be able to explain:

- **What** is gender responsive PFM and **why** it is important
 - **How** GRPFM PEFA measures responsiveness of PFM systems and processes
 - **Country experiences** in applying the GRPFM PEFA supplementary framework
- 

AGENDA

1. What is gender responsive PFM?

2. PEFA GRPFM framework

3. Experience from **Haiti**

4. Experience from **Indonesia**

5. Experience from **Ukraine**

6. Next steps & resources

AGENDA

1. What is gender responsive PFM?

2. PEFA GRPFM framework

3. Experience from **Haiti**

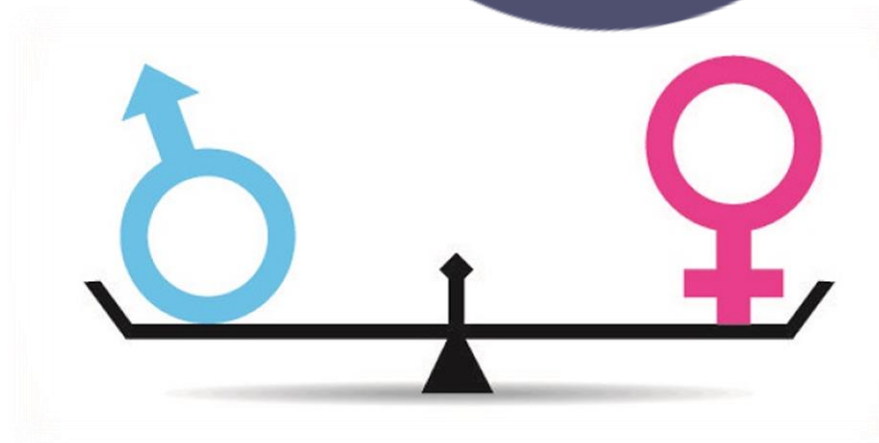
4. Experience from **Indonesia**

5. Experience from **Ukraine**

6. Next steps & resources

What is gender responsive PFM?

Integrating **gender considerations** into the **design, implementation, reporting, tracking, monitoring,** and **evaluation** of budget policies, both expenditure and revenue.



Integration throughout the budget cycle



BUDGET PLANNING

- Ex ante gender impact assessment
- Budget circular
- Budget documentation
- Sex-disaggregated data

Integration throughout the budget cycle



BUDGET PLANNING

- Ex ante gender impact assessment
- Budget circular
- Budget documentation
- Sex-disaggregated data

BUDGET EXECUTION

- Tracking expenditure

Integration throughout the budget cycle

ACCOUNTING & REPORTING

- Ex post evaluation
- Reports



BUDGET PLANNING

- Ex ante gender impact assessment
- Budget circular
- Budget documentation
- Sex-disaggregated data

BUDGET EXECUTION

- Tracking expenditure

Integration throughout the budget cycle

SCRUTINY & AUDIT

- Gender audits
- Legislative scrutiny

ACCOUNTING & REPORTING

- Ex post evaluation
- Reports



BUDGET PLANNING

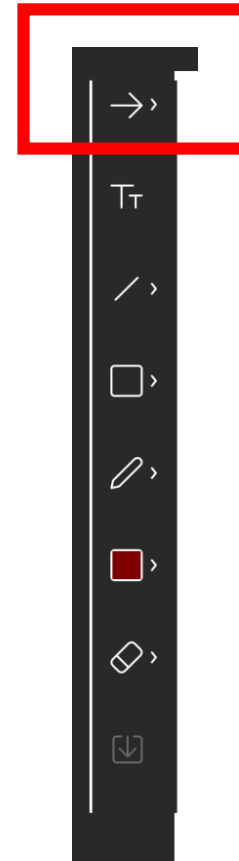
- Ex ante gender impact assessment
- Budget circular
- Budget documentation
- Sex-disaggregated data

BUDGET EXECUTION

- Tracking expenditure

Quiz

1. Please use the animation toolbox in Webex (on the left side of your screen).
2. Then use the arrow function on the top of the toolbox.



How many countries around the world undertake gender responsive PFM?

Use the **arrow** in the animation toolbar.

20

40

80

Albania, Austria, Belgium, Finland, Iceland, Ireland,
Netherlands, Norway, North Macedonia, Sweden, Ukraine, ...



80 COUNTRIES

Canada; to
some extent
USA

Bangladesh,
Indonesia, India,
Japan, Korea,
Pakistan,
Philippines, Sri
Lanka, ...

Argentina, Barbados,
Chile, Dominican
Republic, Mexico, St
Kitts and Nevis, ...

Ethiopia,
Morocco,
Rwanda,
Senegal, South
Africa, Tanzania,
Uganda, ...

Australia,
Fiji, Samoa,
...

AGENDA

1. What is gender responsive PFM?

2. PEFA GRPFM framework

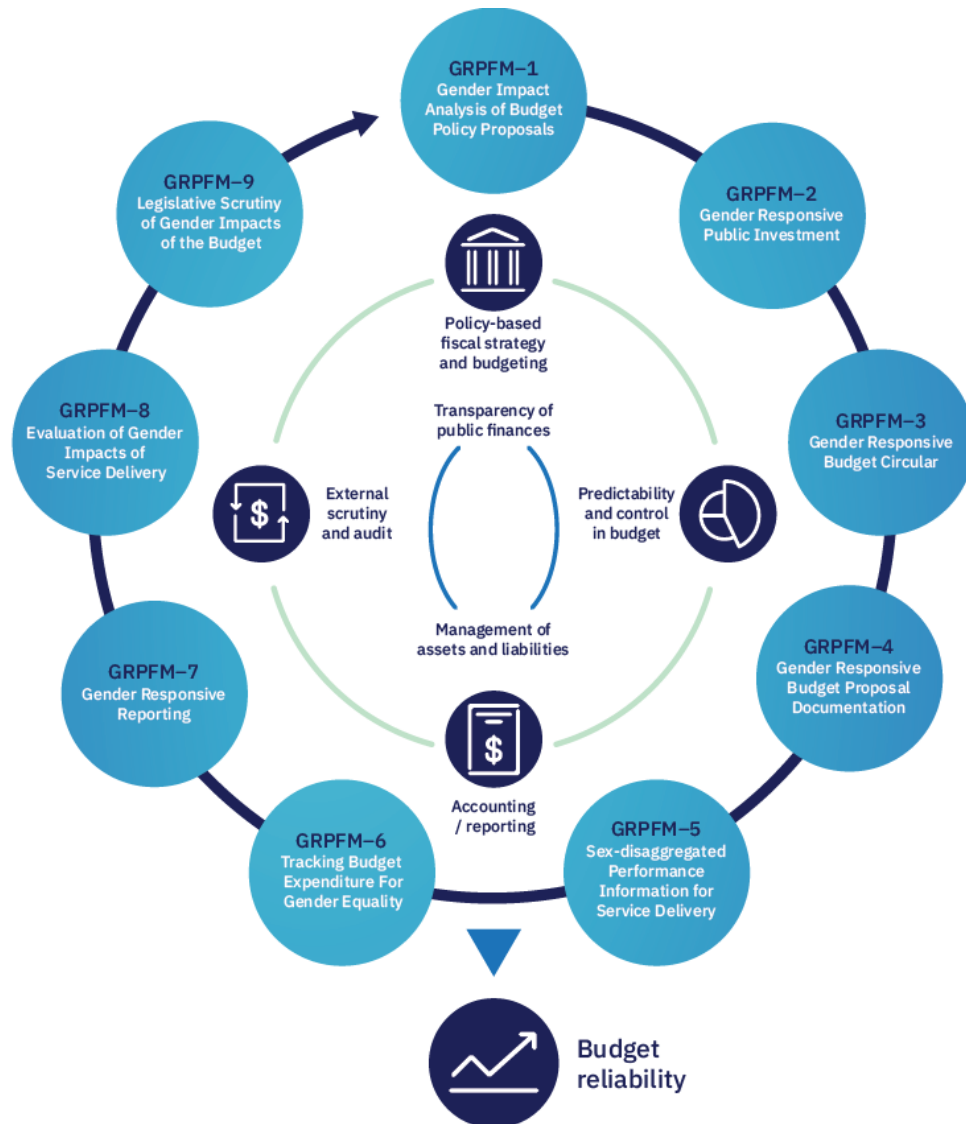
3. Experience from **Haiti**

4. Experience from **Indonesia**

5. Experience from **Ukraine**

6. Next steps & resources

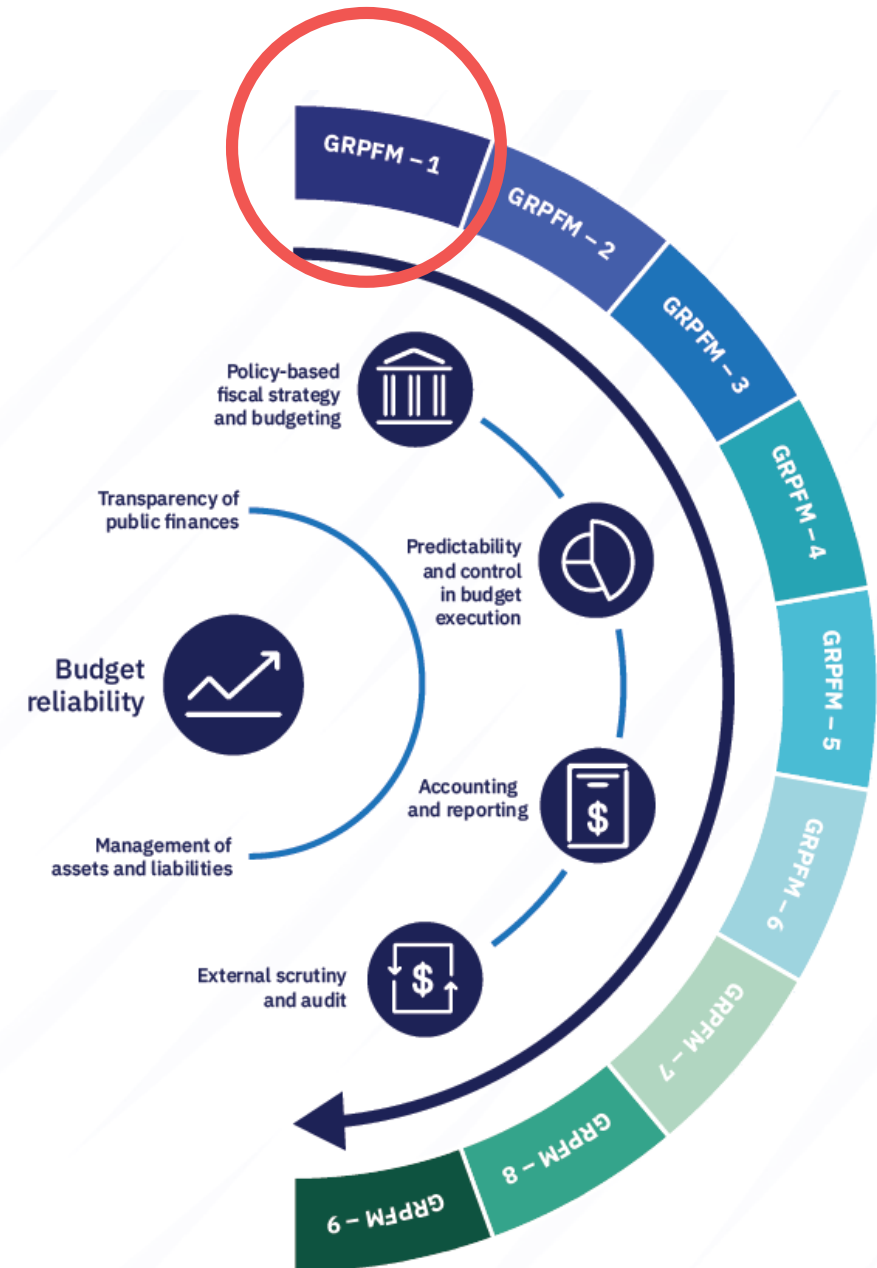
What is PEFA framework for assessing GRPFM?



PEFA GRPFM is a **set of nine indicators** that collects information on the degree to which a country's PFM systems and processes recognize the **different needs of men and women**, and different subgroups of these categories, and promote gender equality.

GRP FM—1 GENDER IMPACT ANALYSIS OF BUDGET POLICY PROPOSALS

Assesses the extent to which the government prepares an assessment of the gender impacts of new **expenditure** and **revenue** policies



GRPFM—1 GENDER IMPACT ANALYSIS OF BUDGET POLICY PROPOSALS

Assesses the extent to which the government prepares an assessment of the gender impacts of new expenditure and revenue policies

Expected direct benefits (gender):

Gender composition of benefiting group

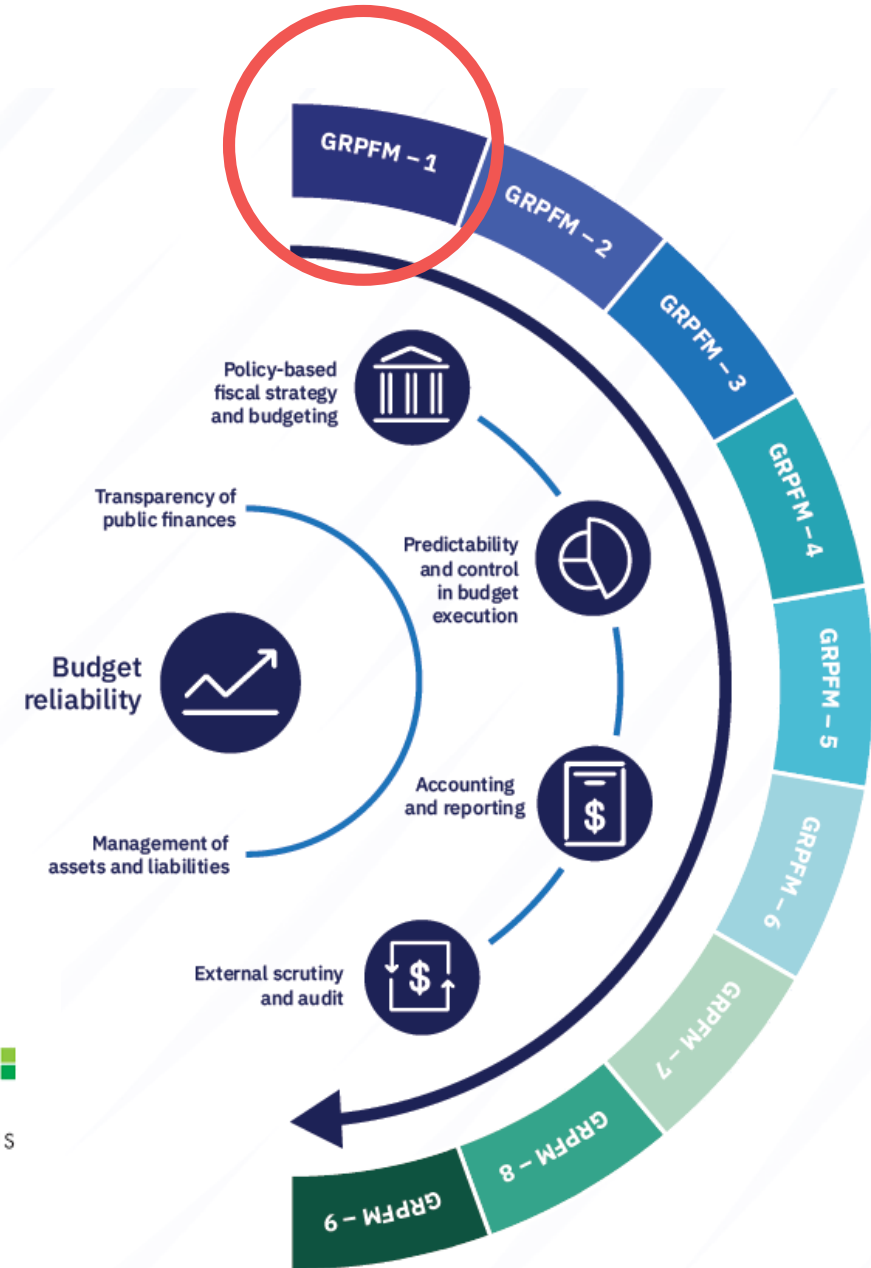


Expected impacts (income, age distribution):

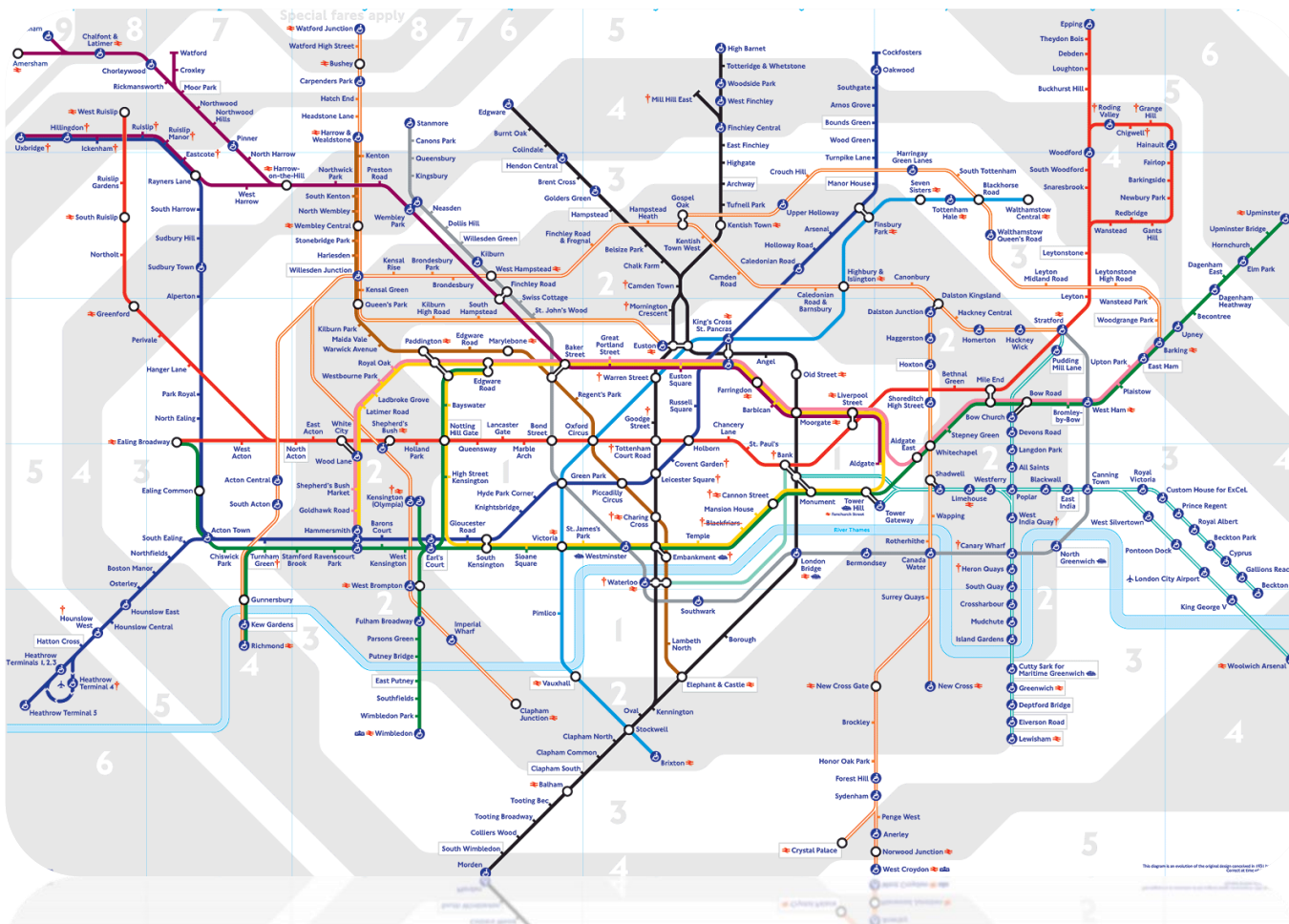
Income distribution



Intergenerational impacts

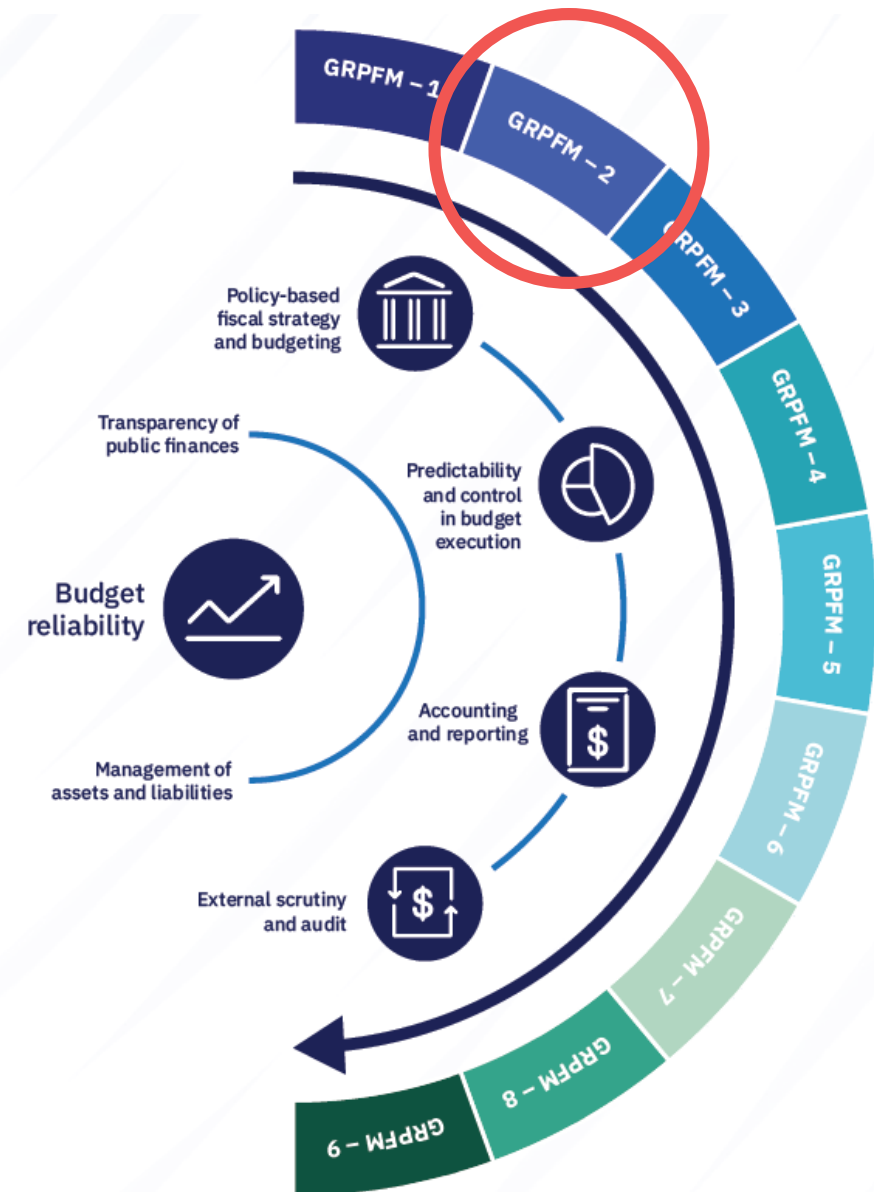


CHAT: If you were designing a metro station in London, what gender considerations would you include in the design?



GRPFM—2 GENDER RESPONSIVE PUBLIC INVESTMENT MANAGEMENT

Assesses the extent to which **economic analyses** of investment projects include gender impact assessment



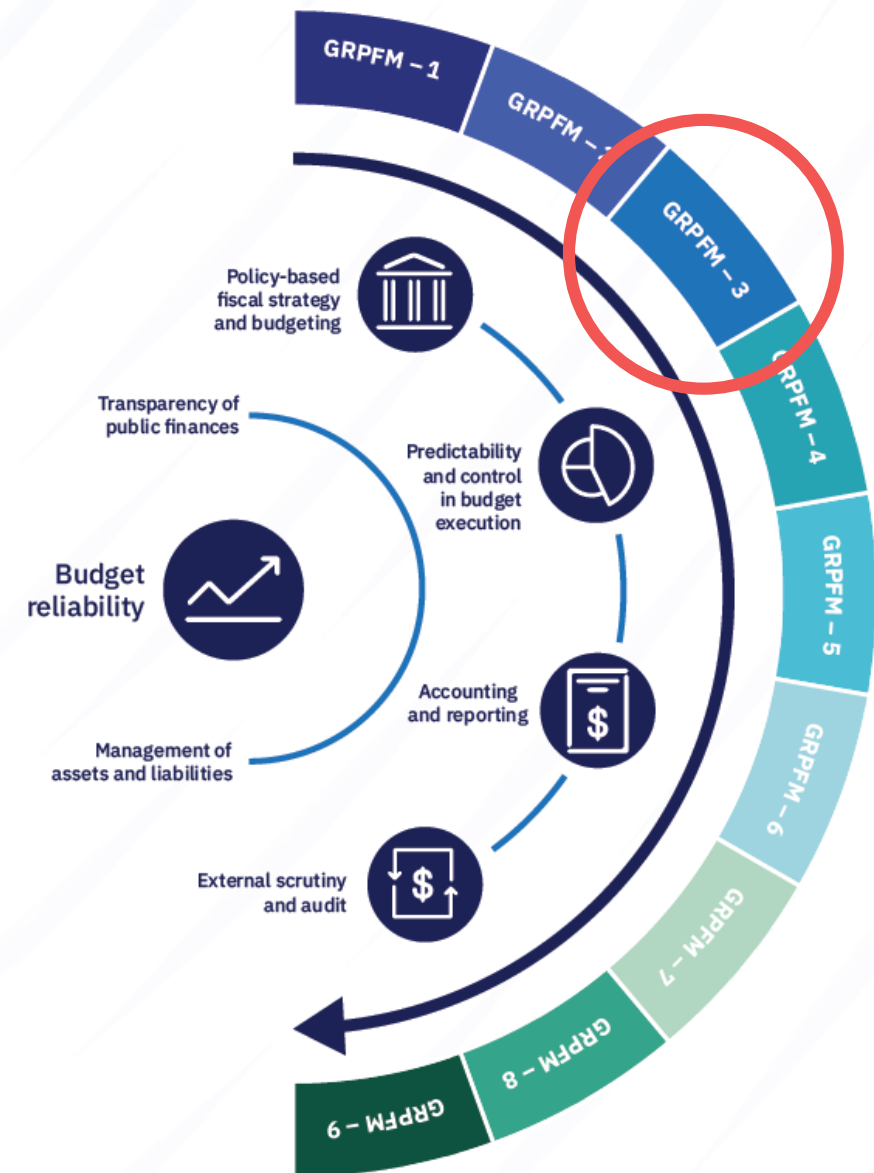
GRPFM—2 GENDER RESPONSIVE PUBLIC INVESTMENT MANAGEMENT

Assesses the extent to which economic analyses of feasibility studies of investment projects included gender impact assessment

GRPFM—3 GENDER RESPONSIVE BUDGET CIRCULAR

Assesses if the budget circular contains requirements for budget agencies to include information on:

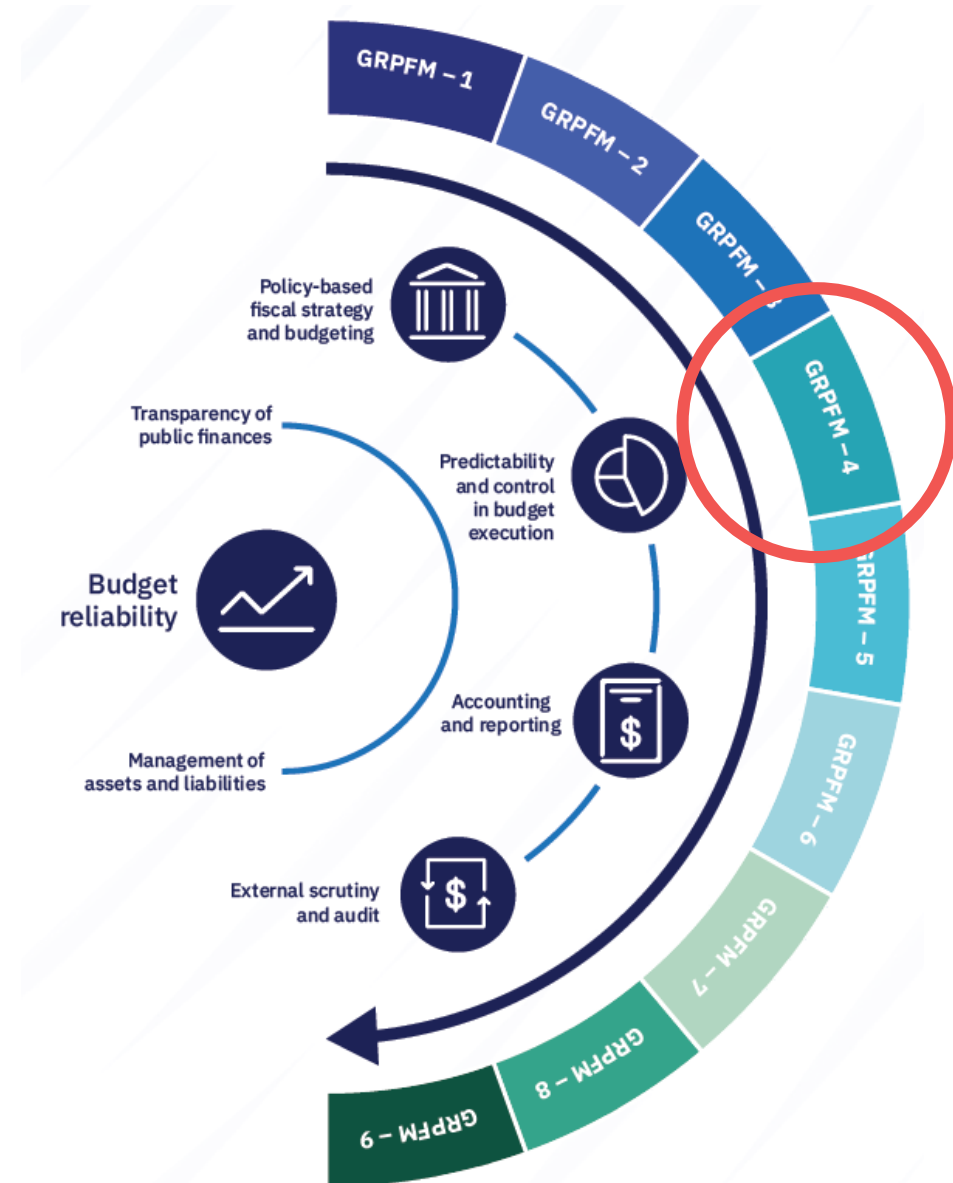
- Gender impacts of new spending proposals and proposed reductions in expenditures
- Sex-disaggregated data on results of programs



GRPFM-4 GENDER RESPONSIVE BUDGET PROPOSAL DOCUMENTATION

Assesses if the budget documentation includes information:

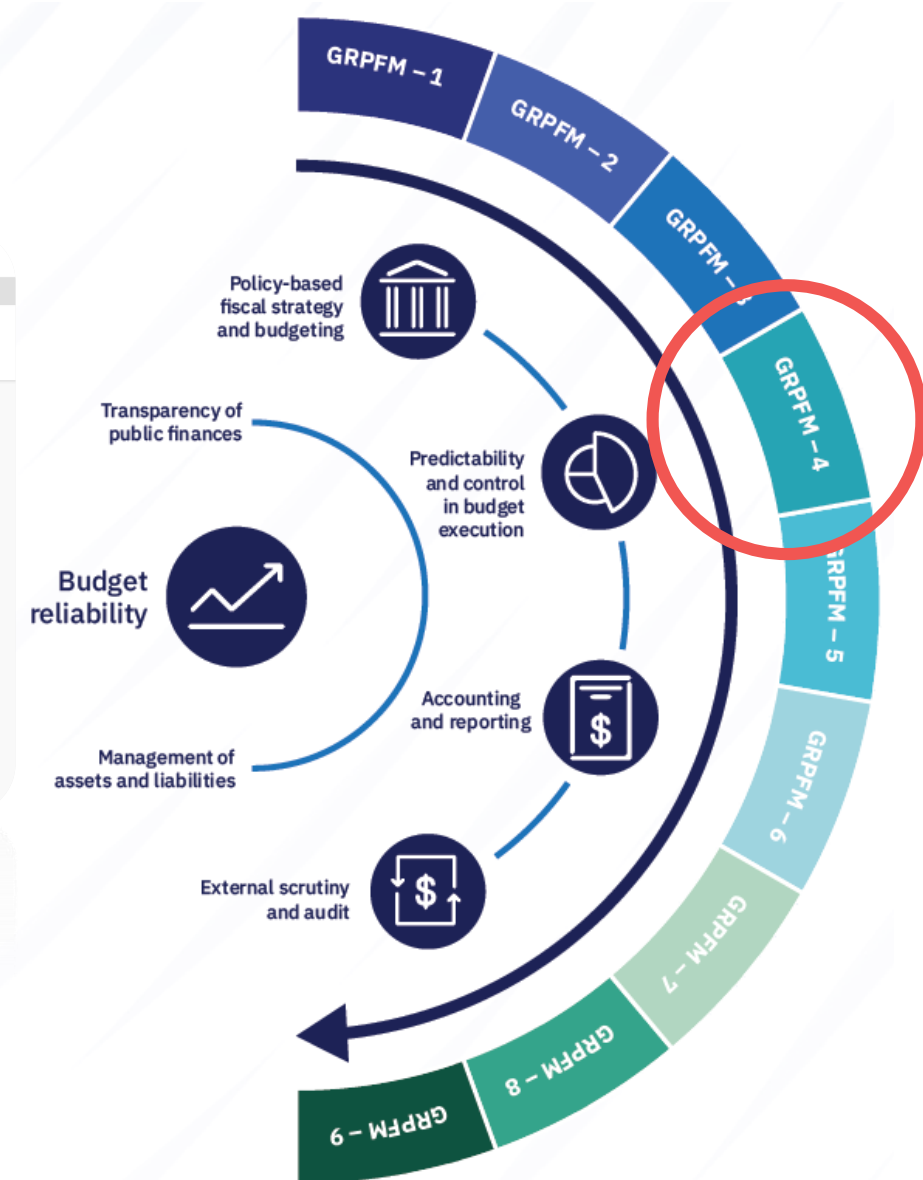
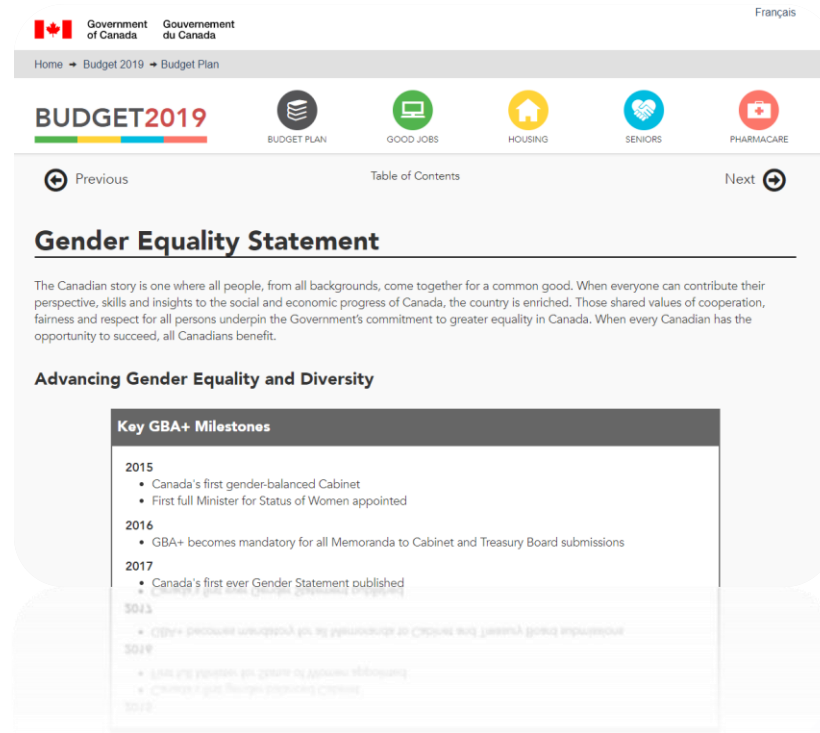
1. An overview of government's policy priorities for improving gender equality
2. Details of budget measures aimed at strengthening gender equality
3. Assessment of the impacts of budget policies on gender equality



GRPFM-4 GENDER RESPONSIVE BUDGET PROPOSAL DOCUMENTATION

Assesses if the budget documentation includes information:

1. An overview of government's policy priorities for improving gender equality
2. Details of budget measures aimed at strengthening gender equality
3. Assessment of the impacts of budget policies on gender equality



QUIZ: Which country was the first to produce a gender budget statement?

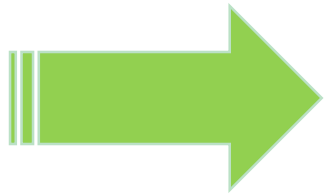
Australia

Canada

South
Africa

Sweden

QUIZ: Which country was the first to produce a gender budget statement?



Australia

Canada

South
Africa

Sweden

QUIZ: What is sex-disaggregated data?

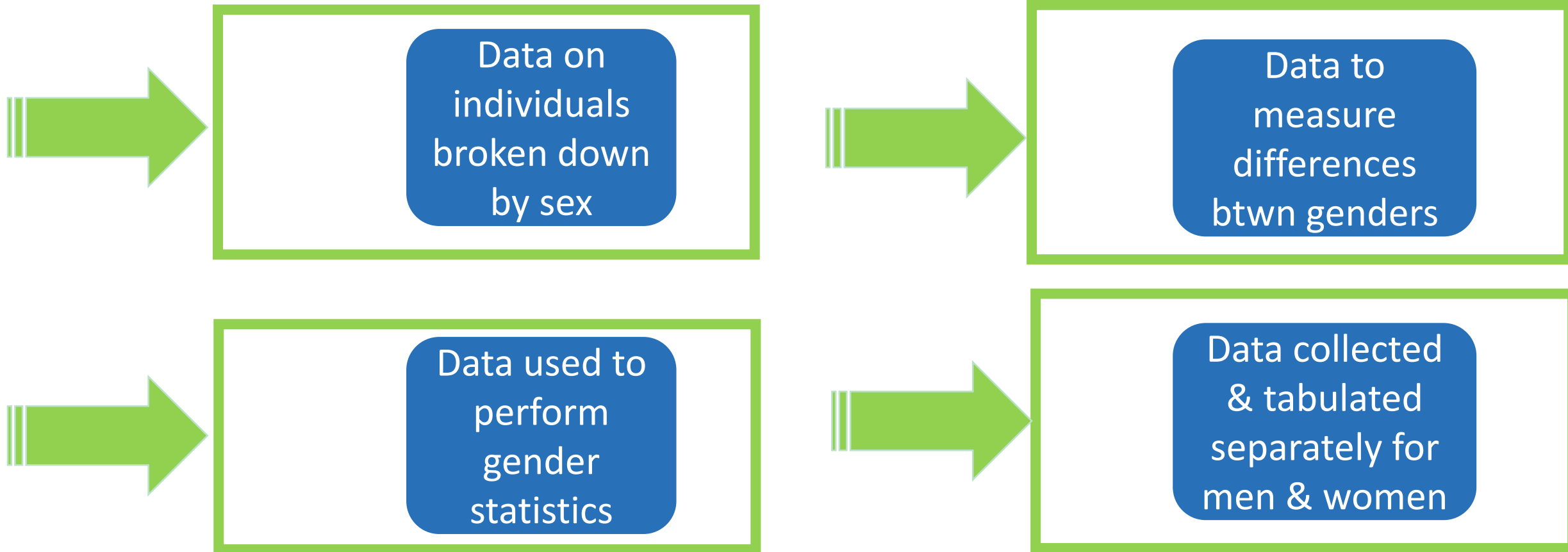
Data on
individuals
broken down
by sex

Data to
measure
differences
btwn genders

Data used to
perform
gender
statistics

Data collected
& tabulated
separately for
men & women

QUIZ: What is sex-disaggregated data?



**Sex
disaggregated
data**



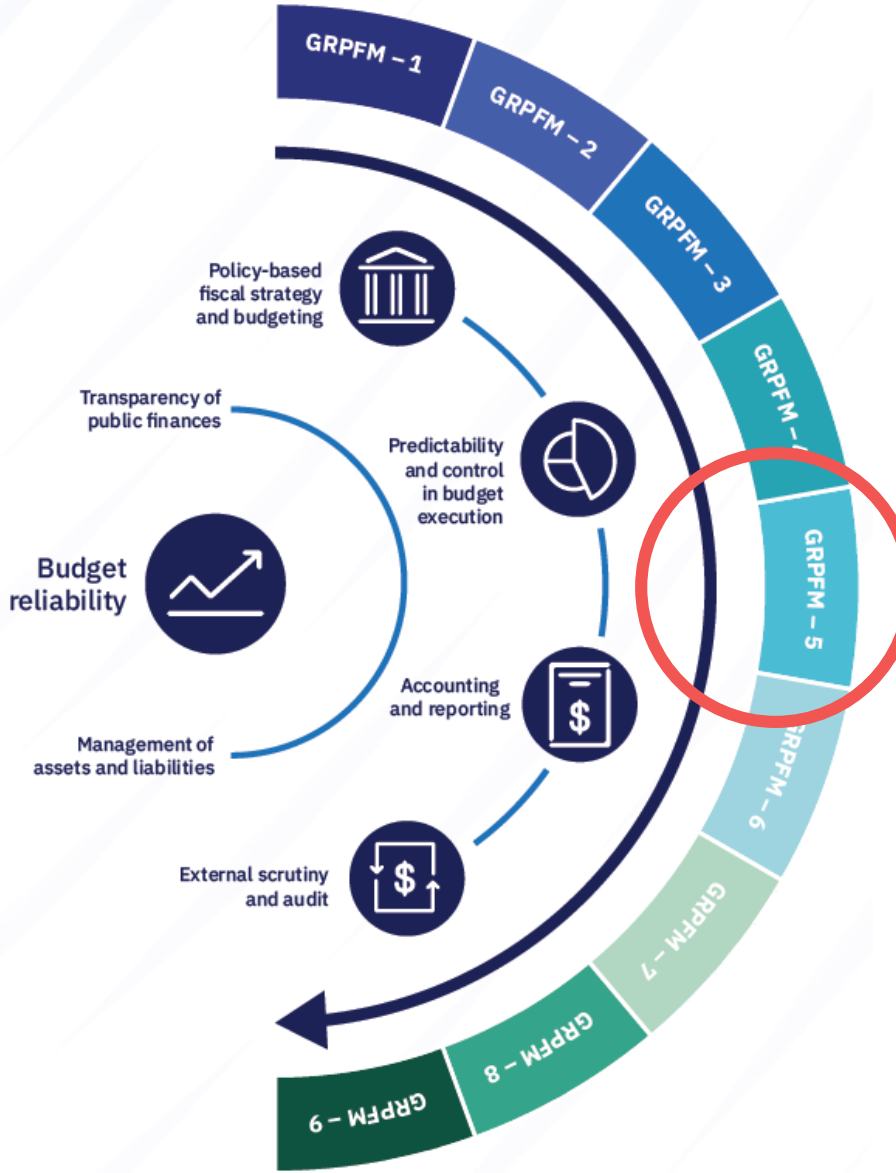
**Gender
statistics**



**Design,
implementation &
evaluation of
budget policies**

GRPFM-5 SEX-DISAGGREGATED PERFORMANCE INFORMATION FOR SERVICE DELIVERY

Assesses the extent to which sex-disaggregated data is included in governments' plans and reports on service delivery (e.g., education, health).



GRPFM-5 SEX-DISAGGREGATED PERFORMANCE INFORMATION FOR SERVICE DELIVERY

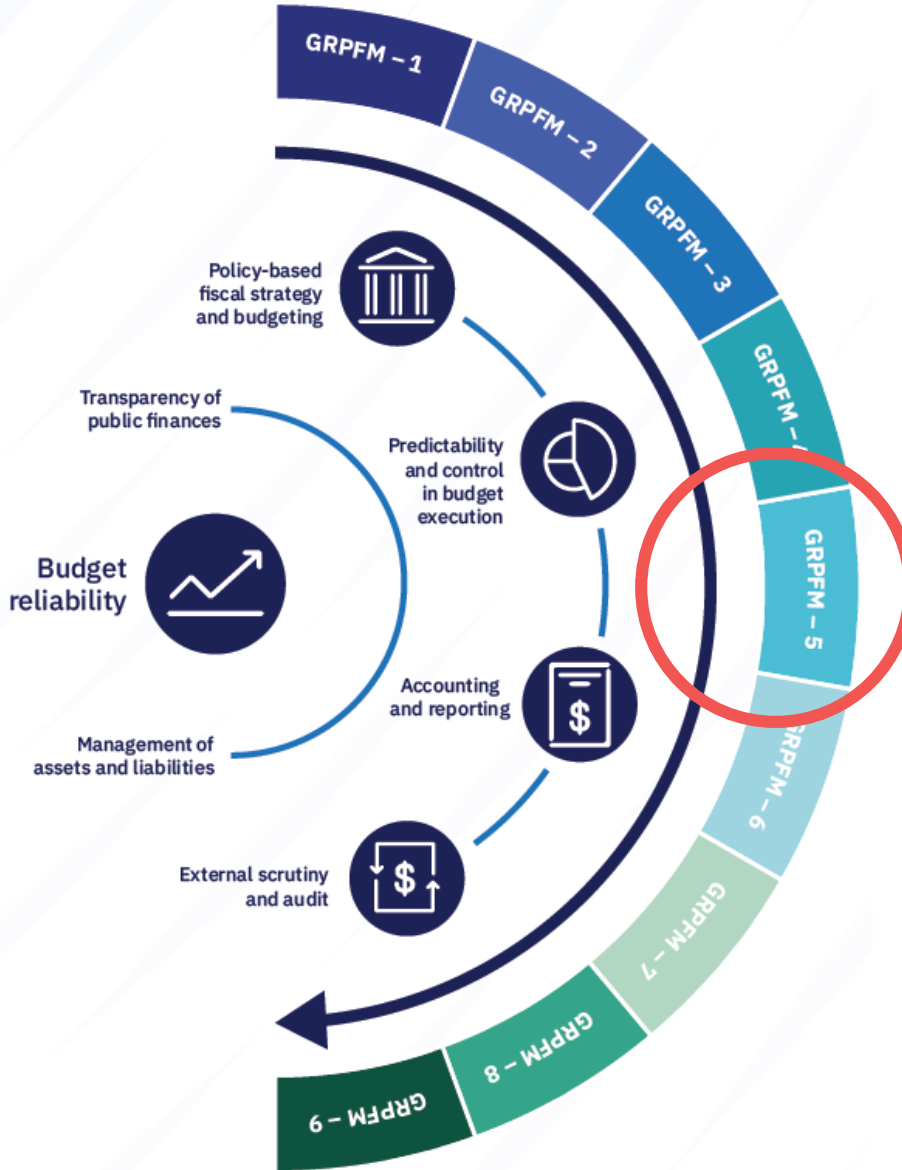
Assesses the extent to which sex-disaggregated data is included in governments' plans and reports on service delivery (e.g., education, health).

Examples of Progress Reported end Q1 2018

	2015	2016	2017	2018
Employment-rate of women with children	60.7%	61.6%	63.5%	Not yet available

	2018 Output Target	Q1 2018 output
Number of children receiving financial support under childcare support schemes	184,000	182,006

	2015	2015	2017	Q1 2018
No of females in apprenticeships	26	60	145	153 (Target for 2018 300)

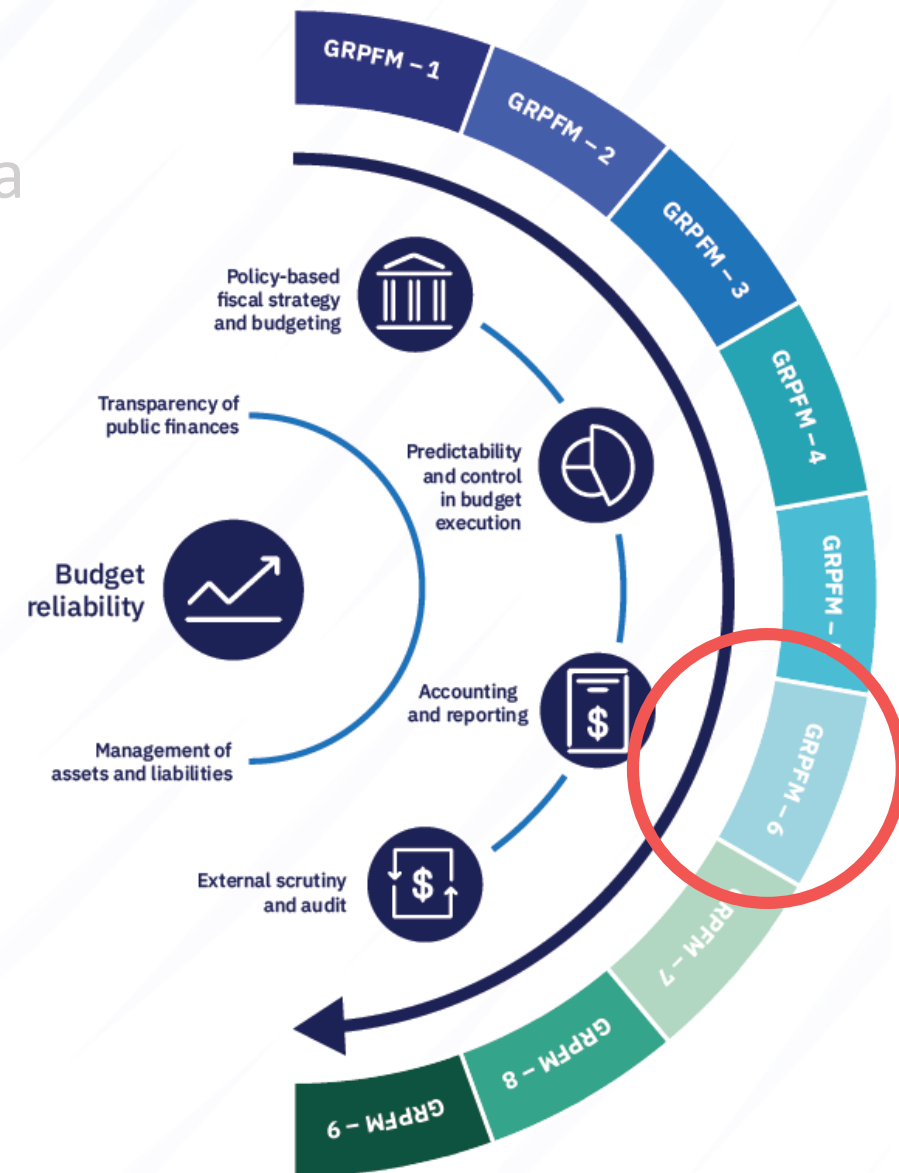


GRPFM-5 SEX-DISAGGREGATED PERFORMANCE INFORMATION FOR SERVICE DELIVERY

Assesses the extent to which sex-disaggregated data is included in governments' plans and reports on service delivery (e.g., education, health).

GRPFM-6 TRACKING BUDGET EXPENDITURE FOR GENDER EQUALITY

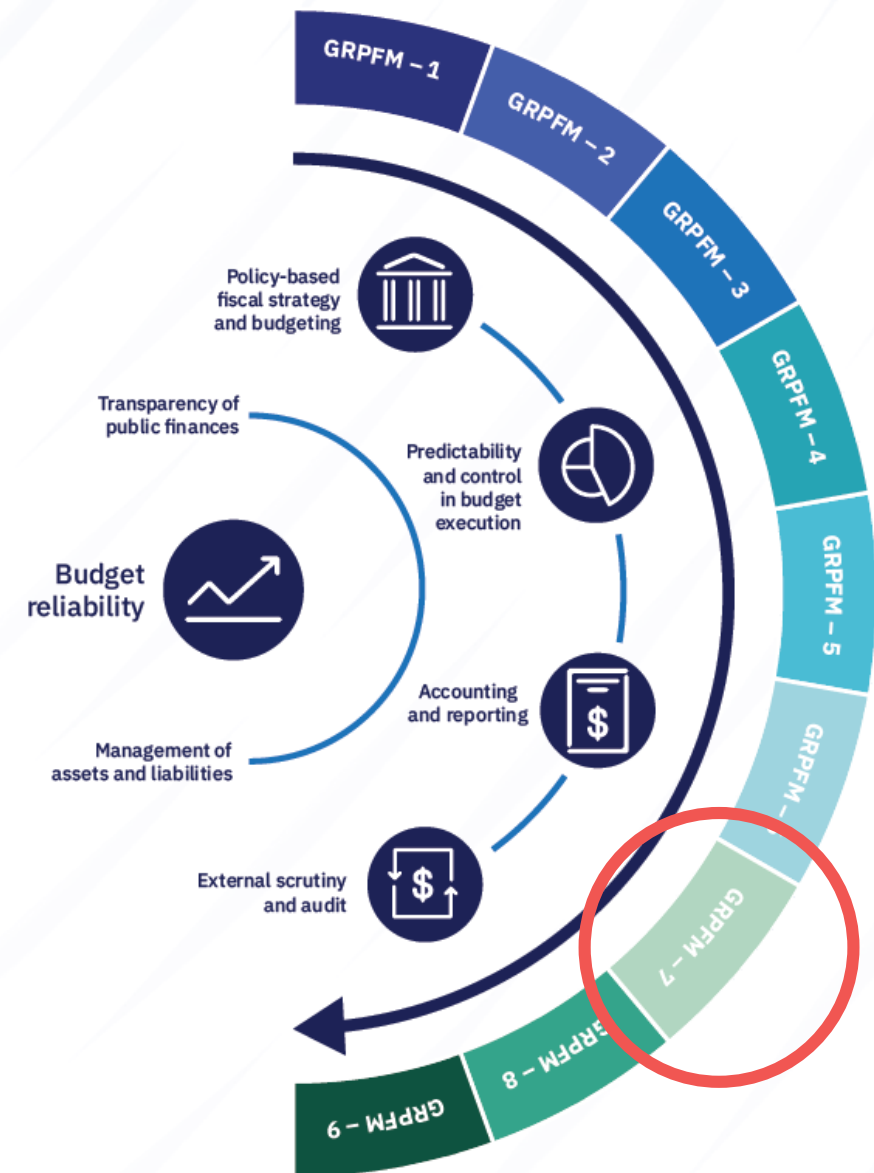
Assesses the government's capacity to track expenditure for gender equality throughout the budget formulation, execution, and reporting processes.



GRPFM-7 GENDER RESPONSIVE REPORTING

Assesses to what extent annual report(s) include information on the following:

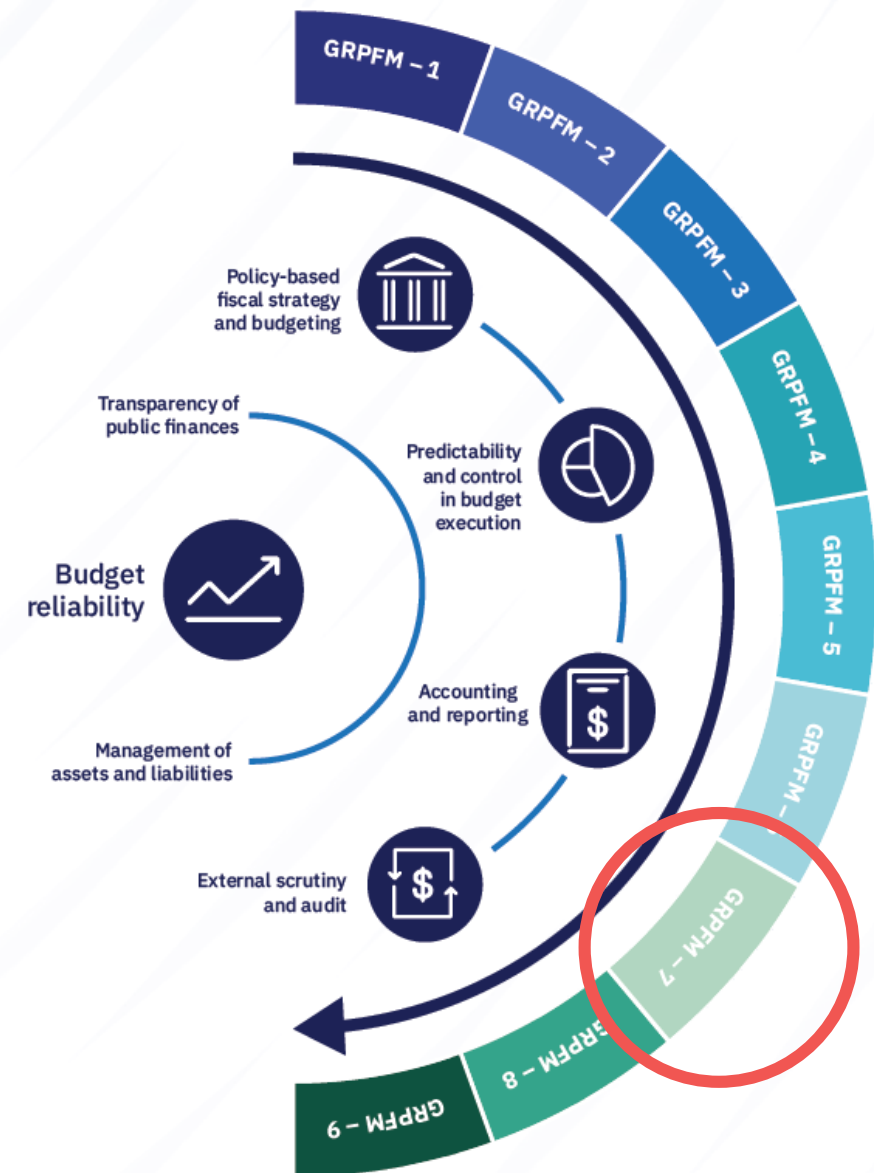
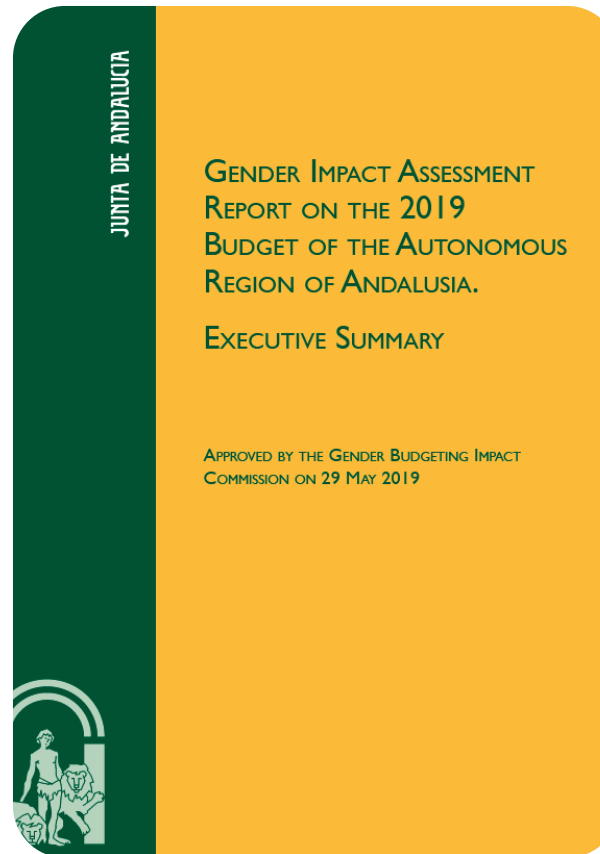
1. A report on gender equality outcomes
2. Data on gender-related expenditure
3. An assessment of the implementation of budget policies and their impacts on gender equality
4. Sex-disaggregated data on budgetary central government employment.



GRPFM-7 GENDER RESPONSIVE REPORTING

Assesses to what extent annual report(s) include information on the following:

1. A report on gender equality outcomes
2. Data on gender-related expenditure
3. An assessment of the implementation of budget policies and their impacts on gender equality
4. Sex-disaggregated data on budgetary central government employment.

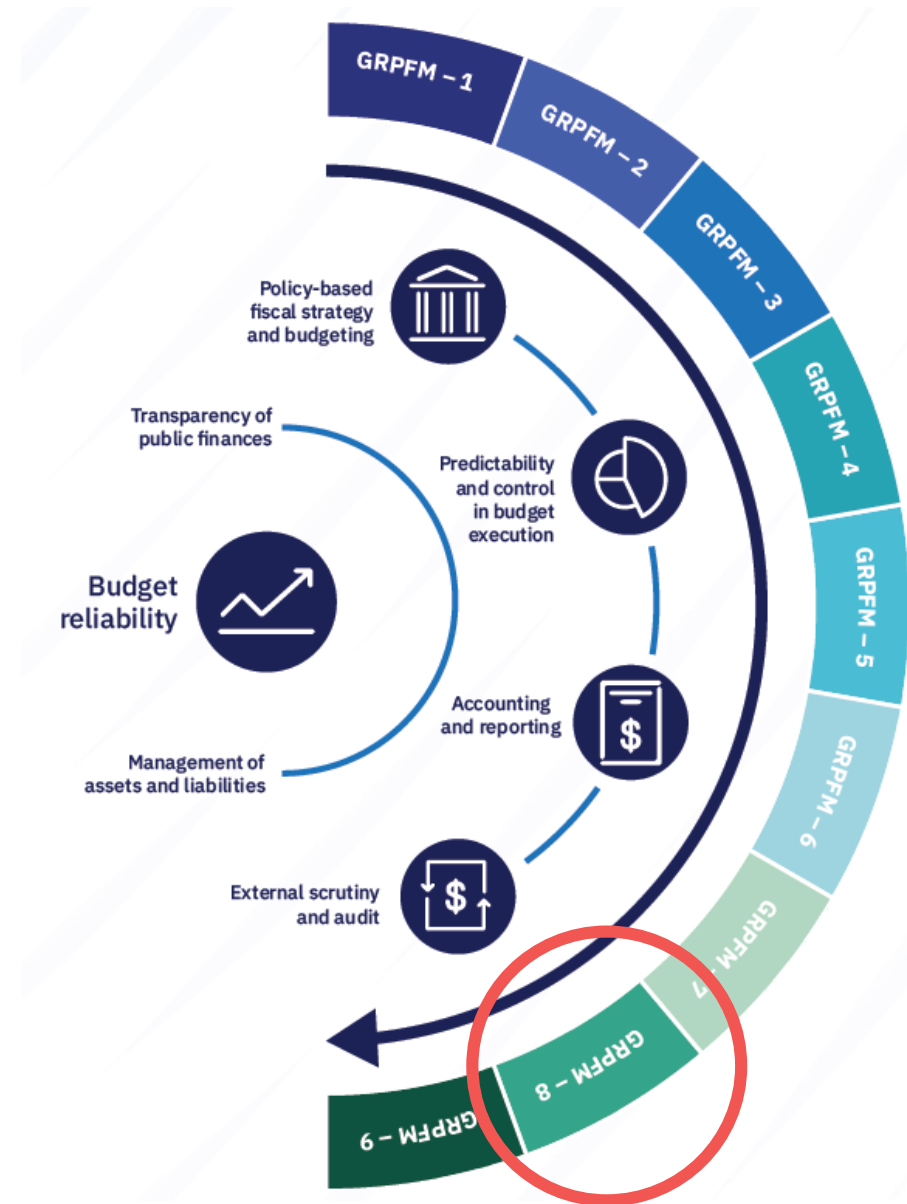


GRPFM-7 GENDER RESPONSIVE REPORTING

Annual report(s) include gender responsive information.

GRPFM-8 EVALUATION OF GENDER IMPACTS OF SERVICE DELIVERY

Assesses the extent to which independent evaluations of the efficiency and effectiveness of public services consider gender impact.



GRPFM-7 GENDER RESPONSIVE REPORTING

Assesses the extent to which annual report(s) include gender responsive information.

GRPFM-8 EVALUATION OF GENDER IMPACTS OF SERVICE DELIVERY

Assesses the extent to which independent evaluations of the efficiency and effectiveness of public services consider gender impact.

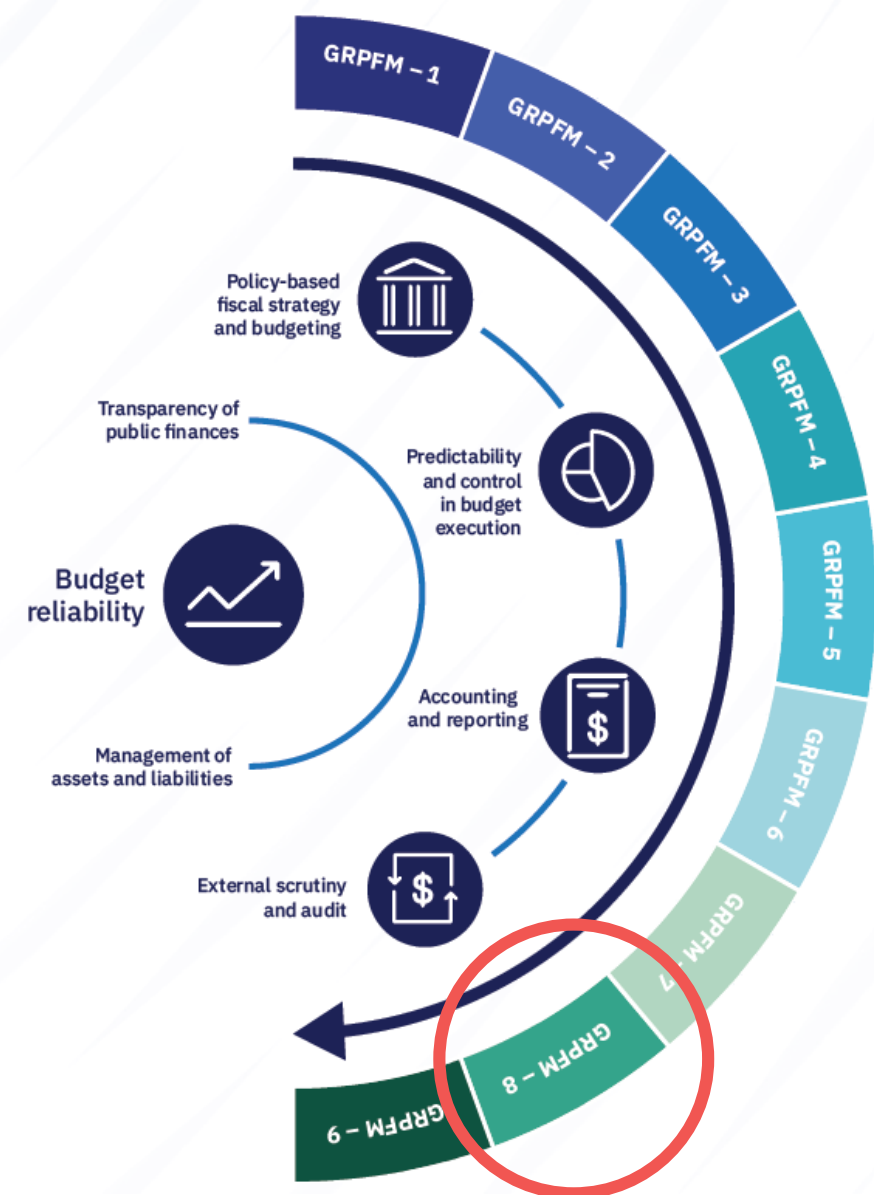


Public service employees

- 30 % MEN
- 70 % WOMEN

Public services employees traveling for business

- 75 % MEN
- 25 % WOMEN



GRPFM-7 GENDER RESPONSIVE REPORTING

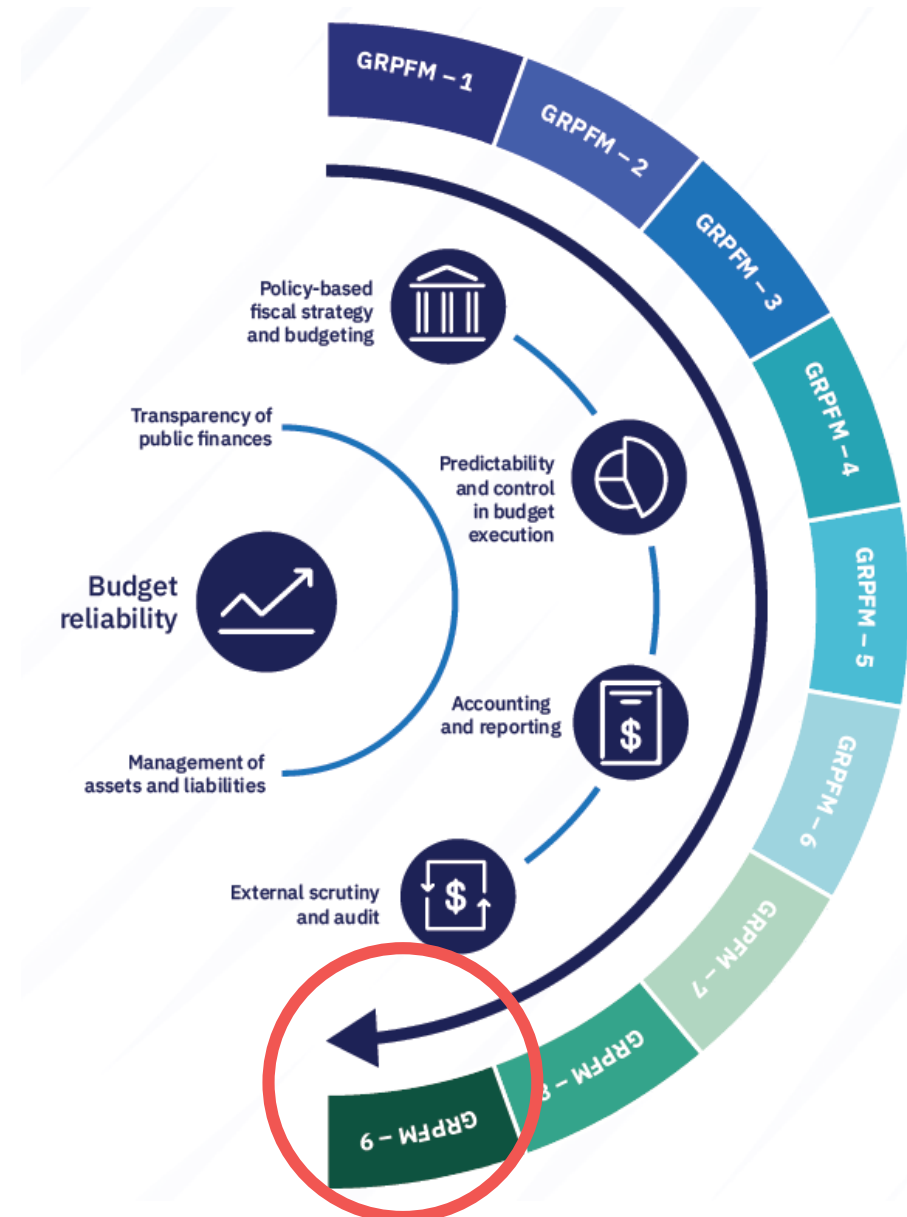
Assesses the extent to which annual report(s) include gender responsive information.

GRPFM-8 EVALUATION OF GENDER IMPACTS OF SERVICE DELIVERY

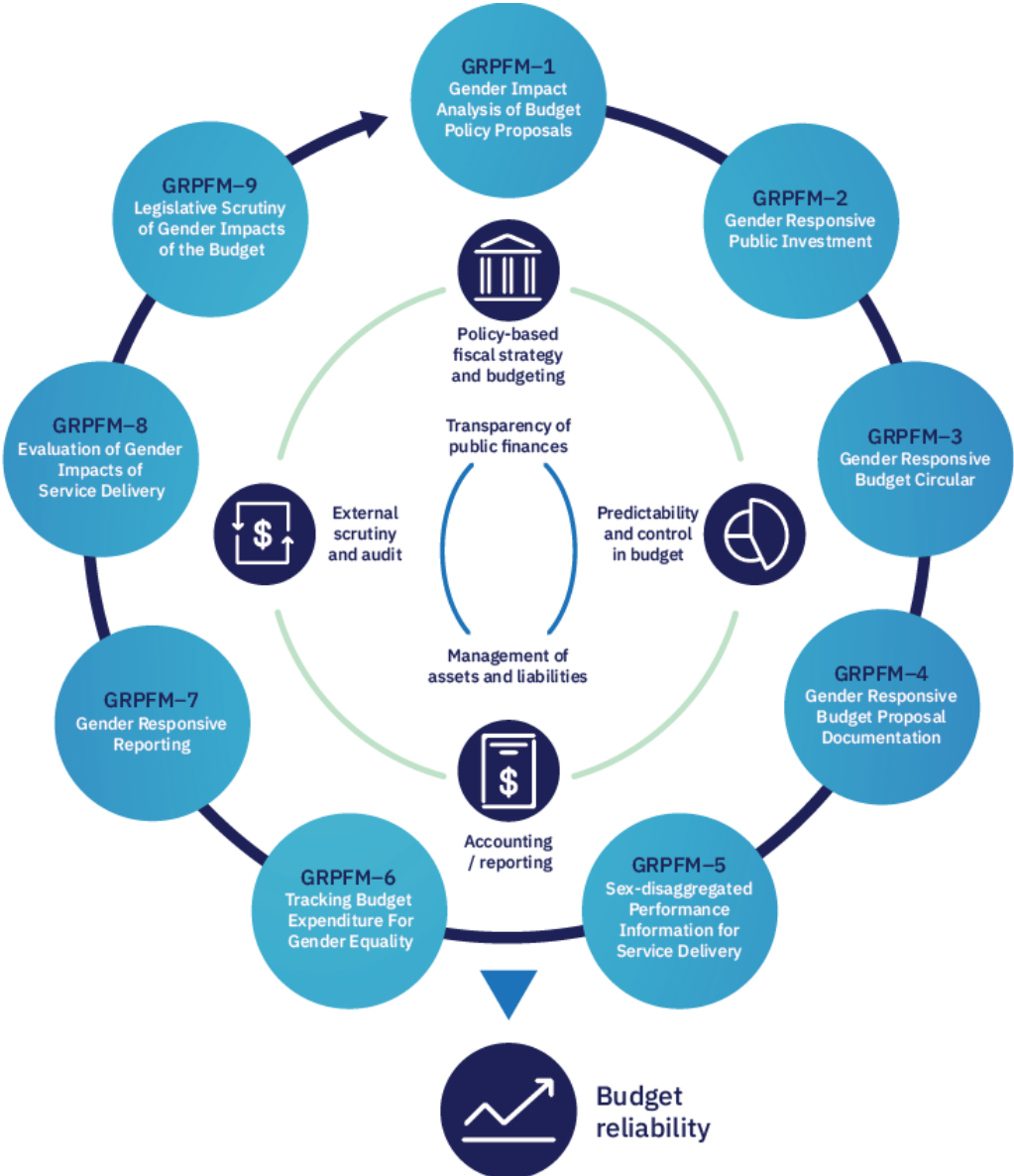
Assesses the extent to which independent evaluations of the efficiency and effectiveness of public services include an assessment of gender.

GRPFM-9 LEGISLATIVE SCRUTINY OF GENDER IMPACTS OF THE BUDGET

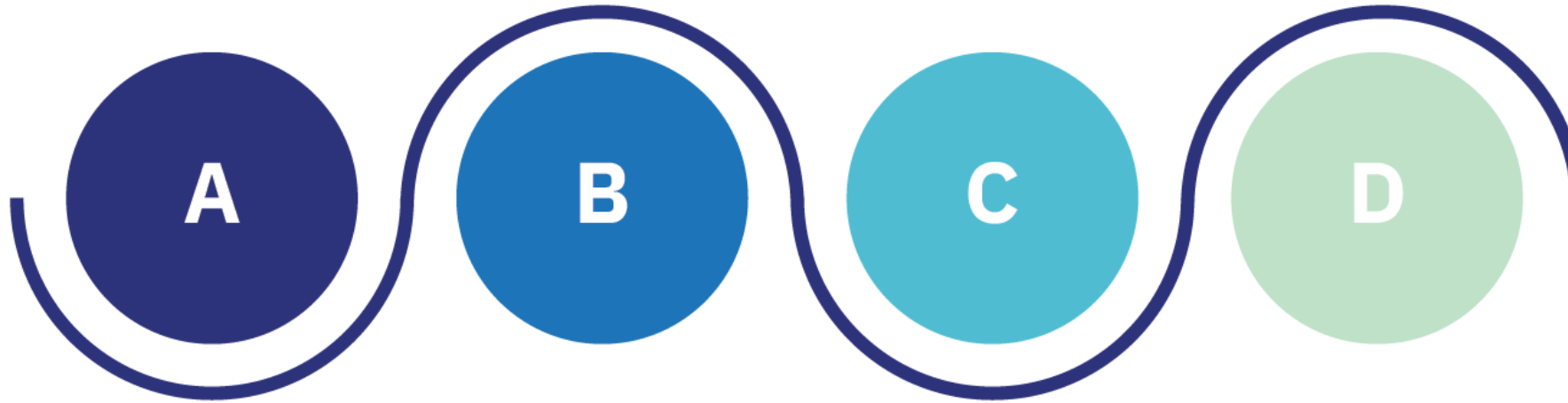
Assesses the extent to which the legislature's budget and audit scrutiny includes the review of gender impacts.



PEFA GRPFM framework



How are countries evaluated?



Gender impact analysis is mainstreamed in the relevant PFM institution, processes, or system.

Gender impact analysis is partially mainstreamed in the relevant PFM institution, processes, or system.

Initial efforts have taken place to mainstream gender impact analysis in the relevant PFM institution, process, or system.

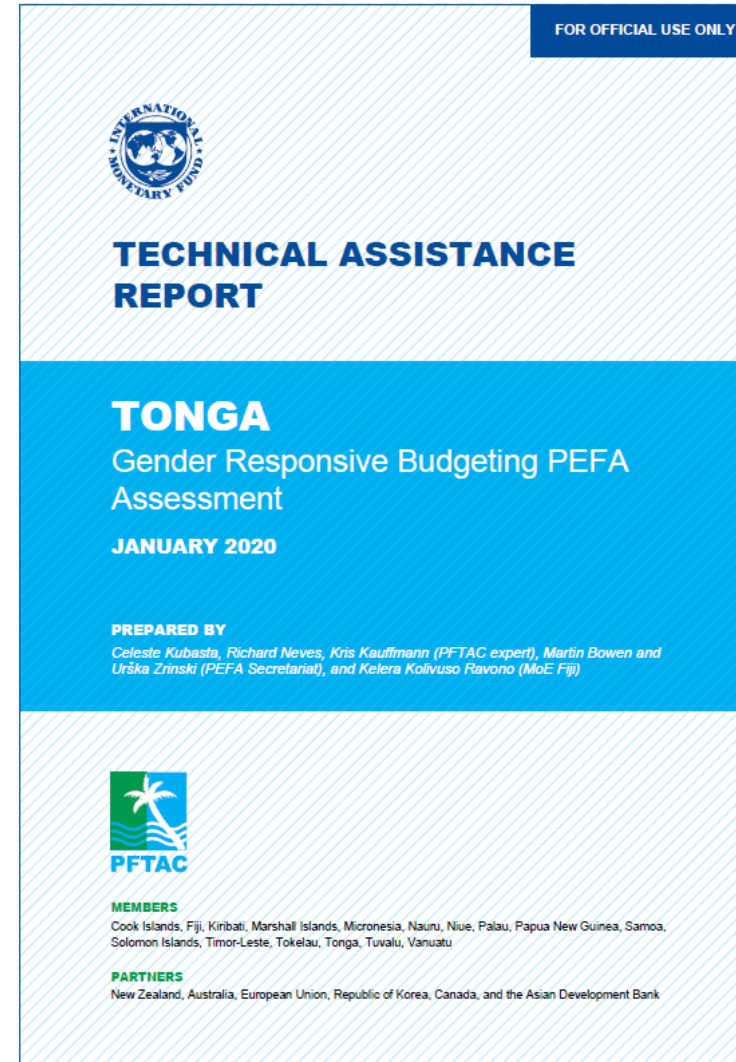
Gender considerations are not included in the relevant PFM institution, processes, or system, or performance is less than required for a C score.

PEFA GRPFM report structure

1. INTRODUCTION
2. OVERVIEW OF ASSESSMENT FINDINGS
3. DETAILED ASSESSMENT OF GENDER RESPONSIVE PFM

GRPFM Annex 1: Summary of performance indicators

GRPFM Annex 2: Sources of information



Use of the GRPFM framework

 Norway
Norwegian Ministry of Foreign Affairs



AGENDA

1. What is gender responsive PFM?

2. PEFA GRPFM framework

3. Experience from Haiti

4. Experience from Indonesia

5. Experience from Ukraine

6. Next steps & resources

Republic of Haiti

Capital: Port-au-Prince

Population 10.2 million

Area 27,750 sq km (10,714 sq miles)

Major languages Creole, French

Life expectancy 61 years (men), 64 years (women)

Currency gourde

UN, World Bank

UN, World Bank

CHALLENGE *challenging*

(newly) established (country)



Key existing initiatives of integrating gender in PFM

Haiti has signed international agreements on gender equality and women's rights

Inter-American Convention on the Prevention and Elimination of Violence against Women (1997)

Cairo Program of Action on Population and Development (1994)

Beijing Program of Action (1995)

Convention on the Elimination of All Forms of Discrimination Against Women (CEDAW) (1981)

National framework

1987 Constitution

Haiti's Strategic Development Plan (PSDH)

2014-2034 equality policy for women and men

2017-2027 national plan to combat violence against women.

Institutions

Ministry of Women's Affairs and Women's Rights

Office for gender equality in the Haitian Parliament

PEFA GRPFM assessment process



- **Purpose:** Understand how gender equality is mainstreamed in the budget process and to highlight the possibilities for enhancing gender sensitivity in PFM



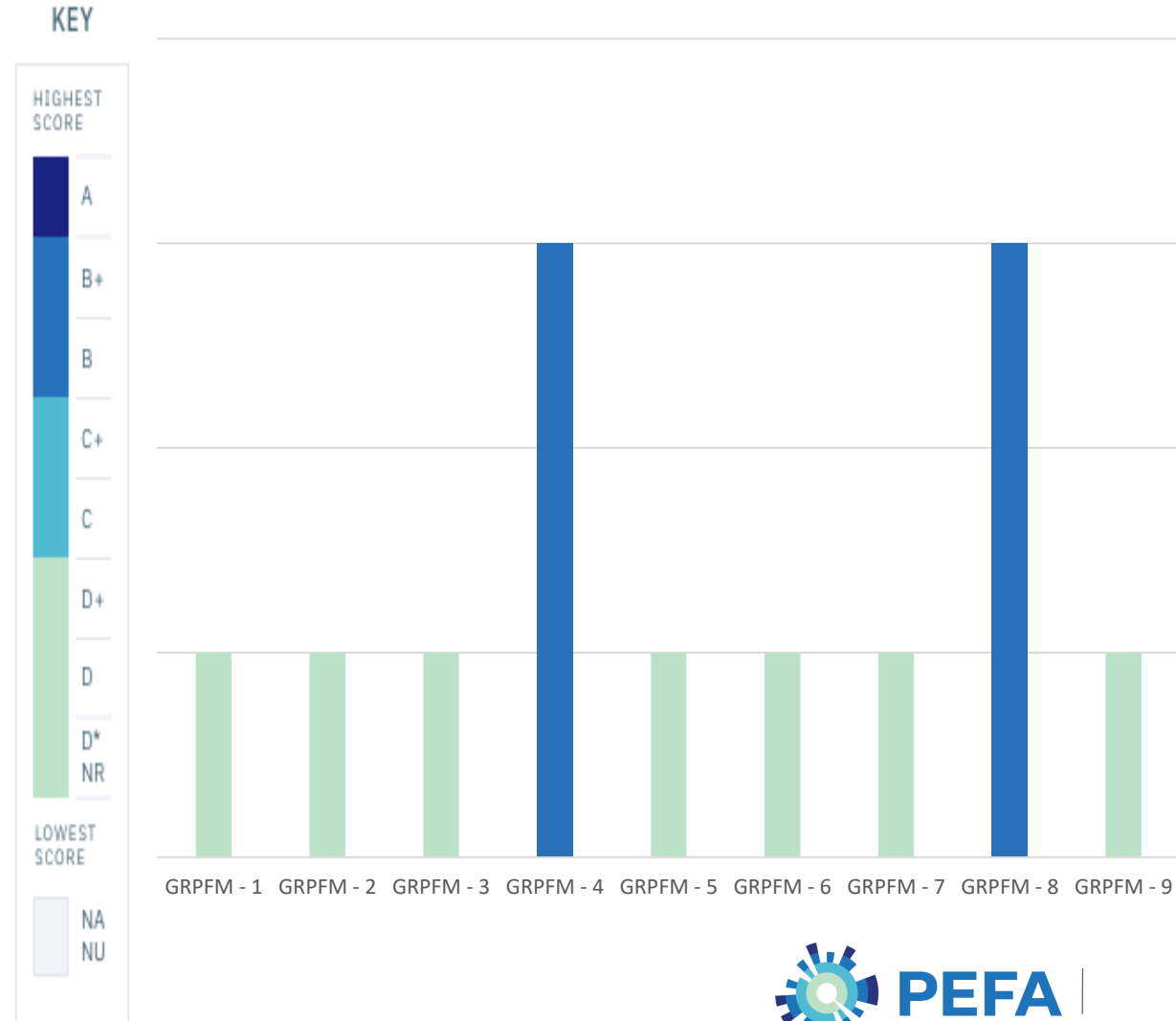
- **How:** Part of the Disaster Response Public Financial Management Review



- **Management:** Assessment led by the World Bank and funded through budget support operation preparation

Key PEFA GRPFM assessment findings

- Gender impact analysis of **budget policy proposals** not integrated
- **Public investment planning** does not systematically consider gender impacts
- **Collection of sex-disaggregated data** and inclusion of this data in budget documentation could be strengthened
- **Gender-sensitive budget circular** could be reintroduced for budget proposals to include information on the effects of fiscal policies on gender equality



AGENDA

1. What is gender responsive PFM?

2. PEFA GRPFM framework

3. Experience from **Haiti**

4. Experience from Indonesia

5. Experience from Ukraine

6. Next steps & resources

Republic of Indonesia

Capital: Jakarta

Population 261 million

Area 1.9 million sq km (742,308 sq miles)

Major languages Bahasa Indonesia
650 local languages

Life expectancy 67 years (men), 71 years (women)

Currency Rupiah

UN, World Bank



Key initiatives of integrating gender in PFM

INPRES 9 / 2000 on National Gender Mainstreaming laid the foundation for gender mainstreaming in planning and budgeting

2000

NATIONAL STRATEGY ON GENDER RESPONSIVE PLANNING AND BUDGETING to Accelerate Gender Mainstreaming (GM) through Gender Responsive Planning and Budgeting with 4 Drivers (Bappenas, MOWECP, MOF and MOHA)

2009 - 2010

The evaluation conducted by MOWECP made it clear that the GRB was advancing both at central and sub-national governments but stronger legal framework is indeed required.

2012

Decree of Ministry of Finance (PMK 94/2017) **on the Guidelines for Preparation of Annual Work Plan and Budget Document is issued and further revised**

2017 - 2018

Where it is now

Bappenas is tasked to lead the revision of “STRATNAS” aimed at issuing a presidential decree on GRPB and include Ministry of Village and Transmigration as new driver

Ministry of Women Empowerment and Child Protection will continue to provide technical assistance to both central and sub-national governments to improve the quality of gender mainstreaming and the institutionalization of Gender Responsive Budgeting in Indonesia

The **MINISTRY OF FINANCE** is tasked to develop policy on integrating GRB in the budgeting process

RPJMN 2020-2024 has Gender is among the 4 Mainstreaming

PEFA GRPFM assessment process



- **Purpose:** To take stock of achievements of integrating gender in PFM systems



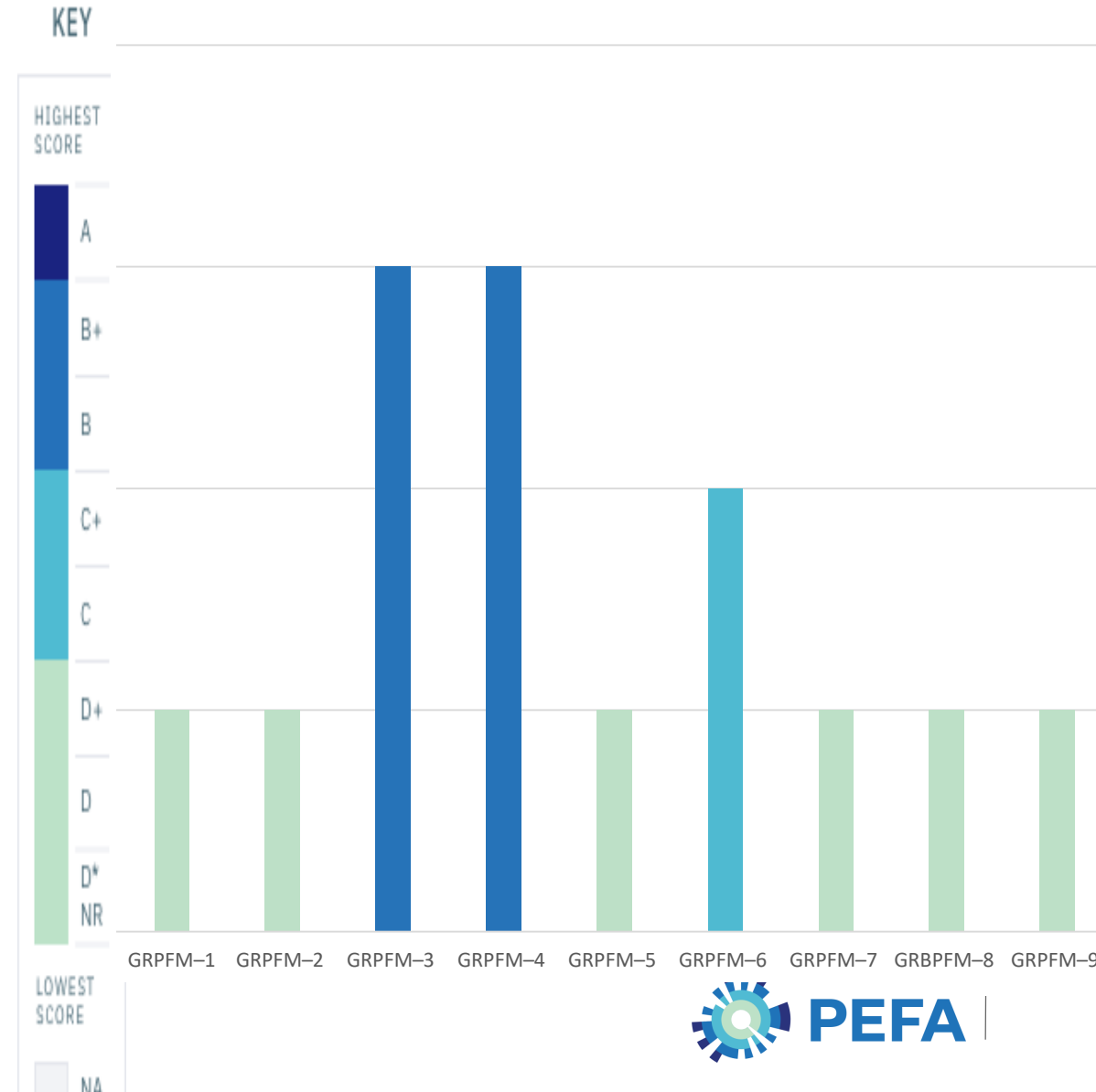
- **How:** Standalone assessment



- **Management:** Assessment led by the World Bank and funded through the multi-donors engagement (EU, Canada and Swiss)

Key PEFA GRPFM assessment findings

- **Decent regulatory framework for GRB:** Solid framework, underpinning the implementation of GRB and requirement for all ministries to select their outputs relevant for gender equality, tag them and analyze them from gender perspective, and develop a gender responsive budget statement
- **The government established gender machinery to promote gender equality:** women ministry and commission for women' human rights
- **Several tools to help implement GRB:** Budget circular, gender budget statement, and tracking expenditure for gender equality



Key PEFA GRPFM assessment findings con't

KEY CHALLENGES

- **Top-down policy is missing.** It is not clear if one of the four drivers should take the lead on how to design program how to design programs and activities that could lead to gender equality
- Gender responsive **awareness** is lacking, especially among the leaders
- **Institutional capacity** is limited
- **Lack of coordination** between planning and budgeting in the overall PFM system, leading to a lack of monitoring system to check the consistency of plan and realization of gender-related outputs and outcomes at different line ministries and agencies.

Proposed next steps

- The program is preparing a set of recommendations to government to be considered in **Roadmap for Gender Responsive PFM**
- Advise and support the government to implement the roadmap through the following set of activities:
 - *review of Government Strategy of Gender Equality*
 - *conduct Public Expenditure Review*
 - *review of government regulations and business process of GRB*
 - *improving Service Delivery in a gender sensitive manner to enhance gender equality in key sectors*
 - *capacity development of government staff to implement GRB*
 - *improving PFM IT systems to become gender responsive*
 - *enhancing demand side of governance through supporting civil society organizations for advocacy of gender equality*

AGENDA

1. What is gender responsive PFM?

2. PEFA GRPFM framework

3. Experience from **Haiti**

4. Experience from **Indonesia**

5. Experience from **Ukraine**

6. Next steps & resources

Ukraine

Capital: Kiev

Population 44.9 million

Area 603,700 sq km (233,090 sq miles)

Major languages

Ukrainian (official), Russian

Life expectancy 64 years (men), 75 years (women)

Currency hryvnya

UN, World Bank

UN, World Bank

Спільна міліція

(уєу)' 10 λєα12 (λ0αηєυ)



Key existing initiatives of integrating gender



70 analyzed budget programs from at the state level



Methodological recommendations on integrating gender



103 analyzed budget programs at the local level



25 legal acts



325 changes in budget programs

PEFA GRPFM assessment process



- **Purpose:** To take stock of achievements of integrating gender in PFM



- **How:** Part of a regular PEFA assessment in Ukraine

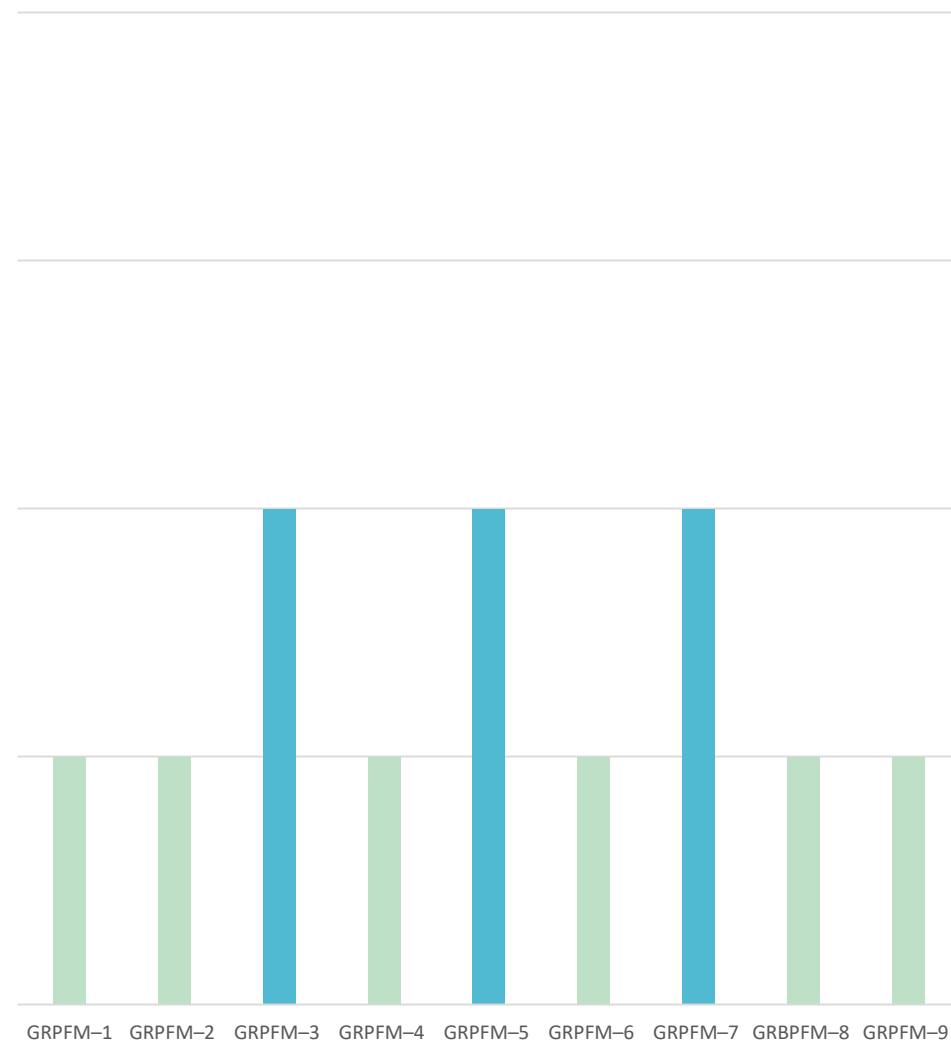


- **Management:** Assessment led by the World Bank and funded by the European Commission

Key PEFA GRPFM assessment findings

- Focus on gender **budget analysis** and changes, but not fully institutionalized
- **Budget documentation** not fully including gender
- **Institutional framework** for GRB need to be strengthened
- **Monitoring and evaluation** function weak (does not exist)
- **Investment management, legislative scrutiny** and policy development not including gender perspective

KEY



Proposed next steps

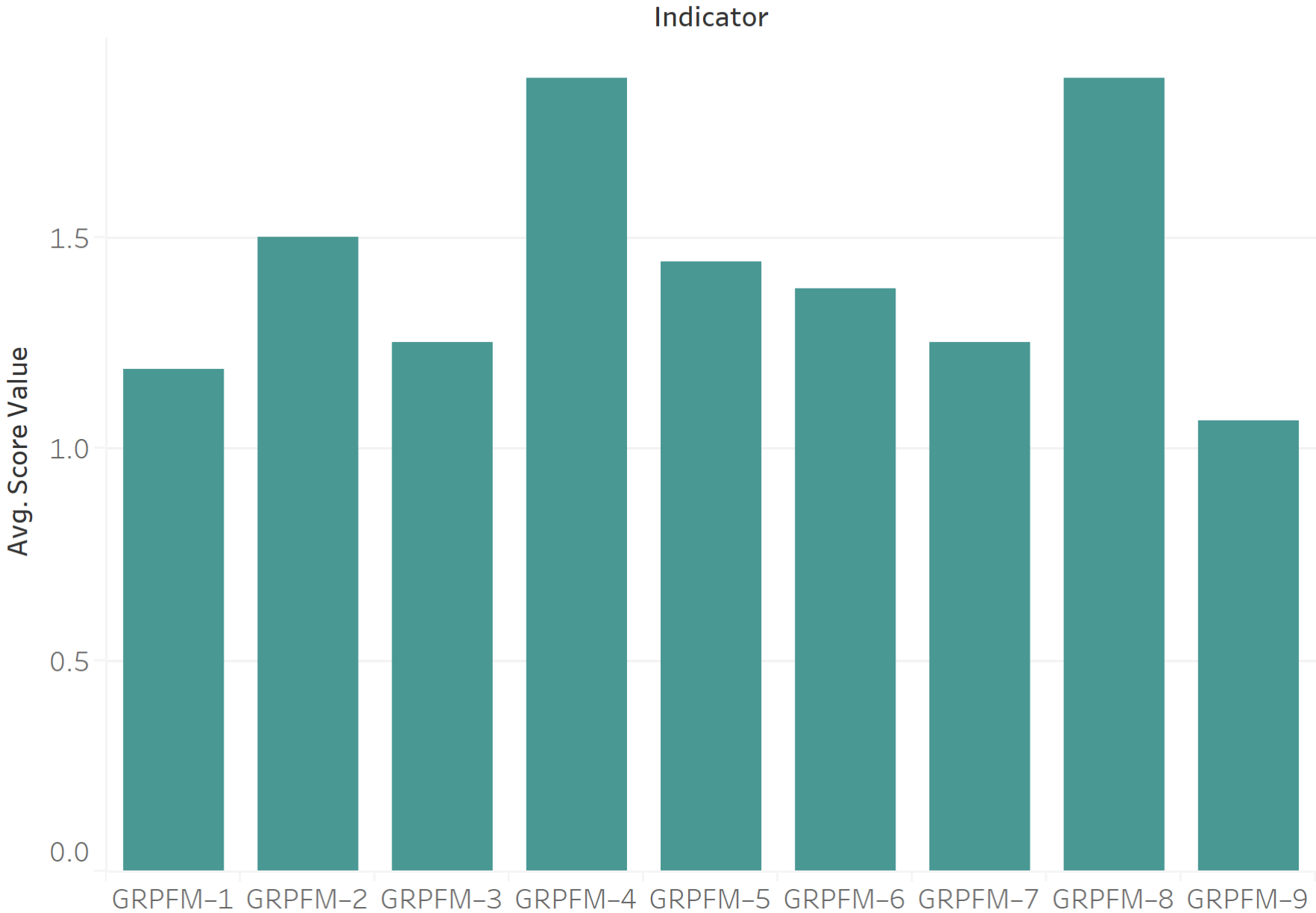
- Assessment of the progress of current work on GRB – where further support is needed
- All entry points for introducing gender in PFM process and practices
- Enabling development of further actions for GRB work in Ukraine



PILOT FINDINGS

Aggregate analysis

PEFA GRPFM Assessments



- GRPFM-1** Gender impact analysis of budget policy proposals
- GRPFM-2** Gender responsive public investment management
- GRPFM-3** Gender responsive budget circular
- GRPFM-4** Gender responsive budget proposal documentation
- GRPFM-5** Sex-disaggregated performance information for service delivery
- GRPFM-6** Tracking budget expenditure for gender equality
- GRPFM-7** Gender responsive reporting
- GRPFM-8** Evaluation of gender impacts of service delivery
- GRPFM-9** Legislative scrutiny of gender impacts of the budget

AGENDA

1. What is gender responsive PFM?

2. PEFA GRPFM framework

3. Experience from **Haiti**

4. Experience from **Indonesia**

5. Experience from **Ukraine**

6. Next steps & resources

CHAT: Making GRPFM a sustainable initiative— What are key success factors?



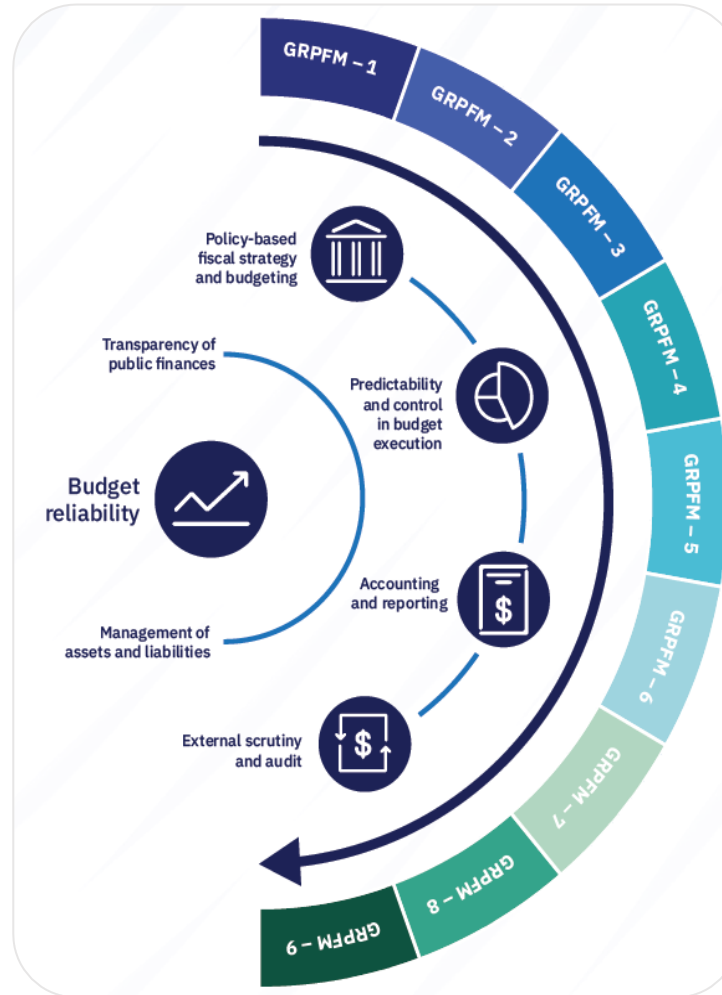
Framework & guidance for assessment teams

PEFA

Guidance for Assessment Teams
PEFA Secretariat
Washington, DC
December 2019

Supplementary Framework for Assessing Gender Responsive Budgeting

Brief presentation of the framework



Country case studies

PEFA

Examples of Integrating Gender Considerations in Public Financial Management

The Republic of Korea

GRPFM-6: Tracking Budget Expenditure for Gender Equality

April 2020

This case study is related to PEFA gender responsive public financial management indicator GRPFM-6 Tracking Budget Expenditure for Gender Equality. The indicator measures the government's capacity to track expenditure for gender equality throughout the budget formulation, execution, and reporting processes.

In the Republic of Korea, the Ministry of Economy and Finance (MoEF) releases guidelines for classifying gender sensitive projects and requests budgetary units to use them for all projects. Each departmental proposal of gender sensitive projects is submitted to the MoEF by line ministries. Final coordination is made in the standing committee of the relevant ministries, including the MoEF and the Ministry of Gender Equality and Family (MoGEF).

Gender sensitive classification sets the following criteria for direct and indirect projects.

Direct projects. Projects that contribute directly to the achievement of gender equality goals:

1. Budget projects that are included in the Basic Plan for Gender Equality Policy (2018-22) and its implementation plan
2. Projects that are selected as key projects for the year through arrangement between the MoEF and the MoGEF and discussions with the related departments.

Indirect projects. Projects that contribute indirectly to the achievement of the Gender Equality Goals:

1. Projects that are called for improvement as a result of the previous year's gender impact assessment
2. Projects of which beneficiaries can be distinguished by gender
3. Welfare projects that have a significant impact on gender equality.

Learn more at pefa.org/gender

- Presentation of indicators
- Guidance
- Case studies
- Templates
- News
- Events
- Useful resources on GRPFM

Welcome to our redesigned site! We'd love to hear your opinion. [Send Us Feedback](#)

PEFA HOME WHAT IS PEFA? PARTNERS RESOURCES ASSESSMENTS NEWS SEARCH

Supplementary Framework for Assessing Gender Responsive Public Financial Management

The PEFA supplementary framework for assessing gender responsive public financial management (GRPFM) is a set of nine indicators that measure the degree to which a country's PFM systems address the government's goals with regard to acknowledging different needs of men and women, and different subgroups of these categories, and promoting gender equality. The framework can be applied in both national and subnational levels.

Click on the indicators below to learn more about what each of them measures.

FRAMEWORK

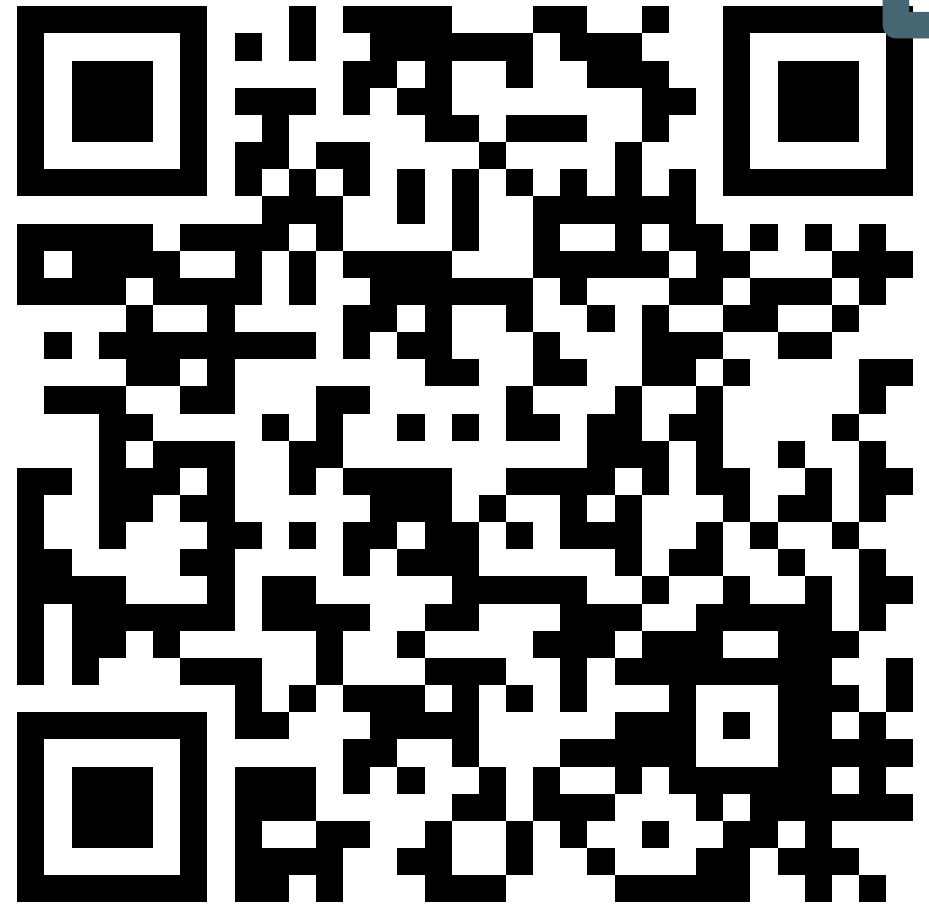
PEFA's Nine GRPFM Indicators

Featured

- PEFA GRPFM Framework and Guidance for Assessment Teams**
The guidance introduces the framework and provides information on the definition and objectives of GRPFM. It presents detailed measurement guidance for a set of key indicators to assess a country's performance in applying gender considerations to its PFM.
English
Français (Coming Soon/ bientôt disponible)
Español (Coming Soon/ próximamente)
Português (Coming Soon/ em breve)
- PEFA GRPFM in Brief: What You Need to Know**
This brochure provides a summary of key characteristics of the Public Expenditure and Financial Accountability (PEFA) supplementary framework for assessing gender responsive public financial management (GRPFM).
English
Français (Coming Soon/ bientôt disponible)
Español (Coming Soon/ próximamente)
Português (Coming Soon/ em breve)
- PEFA GRPFM Assessments**
This is the PEFA assessment portal where you will find a list of countries that have applied the gender responsive public financial management framework and the assessment results.
[View More](#)
- PEFA GRPFM Templates**
These are the templates required to prepare, implement, and report on PEFA gender responsive public financial management assessment findings.
 - PEFA GRPFM Concept Note Template
 - PEFA GRPFM Report Template
- PEFA GRPFM Case Studies**
The PEFA Secretariat is collecting case studies showcasing country experience in integrating gender considerations in budget policies.
 - The Republic of Korea: Sex-Disaggregated Performance Information for Service Delivery
 - The Republic of Korea: Tracking Expenditure for Gender Equality
- PEFA GRPFM News**
Learn more about PEFA GRPFM.
 - February 27, 2020: IMF IMF Blog, Can Public Financial Management Encourage More Opportunities for Men and Women? PEFA Can Tell you How! Posted by Martin Gouyon and Urška Zrnica
 - January 23, 2020: PEFA Launches Supplementary Framework for

Let us know your
thoughts

<https://www.surveymonkey.com/r/GlobalWebinarGRPFMexpost>

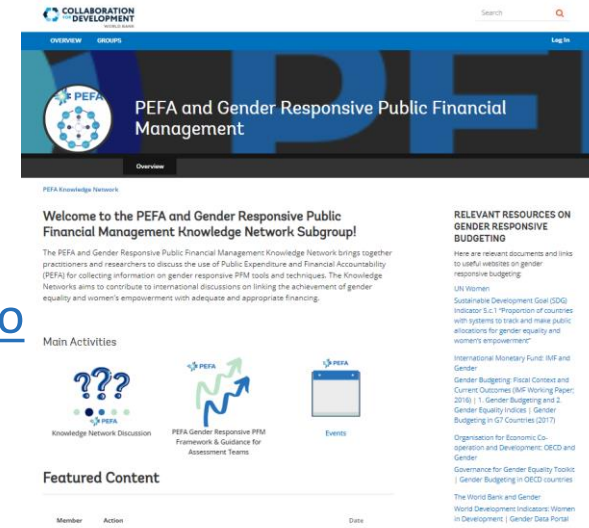


Stay in touch with the PEFA Secretariat

Send us an email:
services@pefa.org







Join PEFA GRPFM
knowledge network at
World Bank's C4D
platform:
<https://collaboration.worldbank.org/>



www.pefa.org

SOCIAL MEDIA

Discover new stories and a diversity of up-to-date content in our social media channels



Useful resources on GRPFM

UN Women

SDG Indicator 5.c.1

<http://gender-financing.unwomen.org/en/highlights/sustainable-development-goal-indicator-5c1>

UN Women – Financing for Development

<http://gender-financing.unwomen.org/en>

The Gender Inequality Index

<http://hdr.undp.org/en/content/gender-development-index-gdi>



IMF

Gender and IMF

<https://www.imf.org/external/themes/gender/>

1. Gender Budgeting and

2. Gender Equality Indices
<https://www.imf.org/external/datamapper/datasets/GD>



OECD

Governance for Gender Equality Toolkit

<http://www.oecd.org/gender/governance/toolkit/>

OECD Gender Initiative
<http://www.oecd.org/gender/>

OECD and Gender Budgeting

<https://www.oecd.org/gov/budgeting/gender-budgeting.htm>



WORLD BANK

Gender Data Portal

<http://datatopics.worldbank.org/gender/home>

The World Bank and Gender

<https://www.worldbank.org/en/topic/gender>

Women, Business and the Law

<https://wbl.worldbank.org/en/aboutus>

World Development Indicators: Women and Development

<https://datacatalog.worldbank.org/dataset/world-development-indicators>



EIGE

European Institute for Gender Equality

Research & Analysis

<https://eige.europa.eu/>



Useful resources on GRPFM & gender equality

Bill & Melinda Gates Foundation

<https://www.gatesfoundation.org/equal-is-greater/>

Harvard Kennedy School

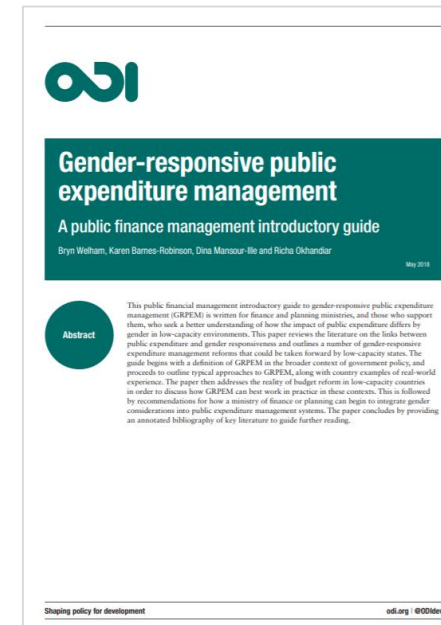
The Harvard Kennedy School Women and Public Policy Program's (WAPPP) Gender Action Portal (GAP) is a collection of summarized research evaluating the impact of specific policies, strategies, and organizational practices to close gender gaps in the areas of economic opportunity, politics, health, and education.
<http://gap.hks.harvard.edu/>

International Labour Organization

<https://www.ilo.org/global/topics/equality-and-discrimination/gender-equality/lang-en/index.htm>

ODI – Overseas Development Institute

<https://www.odi.org/>



Leading GRB experts

Angela O'Hagan
Debbie Budlender
Diane Elson
Elizabeth Klatzer
Janet Stotsky
Maja Bosnić
Rhonda Sharp
...

Gender and Data Resources Related to COVID-19



With the help of our partners and friends, Data2X has compiled a running list of resources and current reporting on gender and gender data as they relate to COVID19 preparedness and response around the world, including the current and anticipated impacts of the pandemic. **This list is not exhaustive and intended for all to use. See something missing? Please email info@data2x.org to share additional analysis, resources, policy responses or suggestions.**

TOPIC: **HEALTH**
TYPE: **KNOWLEDGE BRIEF**

1. [Strategic preparedness and response plan for the novel coronavirus](#) (WHO)
2. [Gender and the coronavirus outbreak](#) (Council on Foreign Relations)
3. [COVID-19: The Gendered Impacts of the Outbreak](#) (The Lancet)
4. [Playing the Long Game: How a Gender Lens Can Mitigate Harm Caused by Pandemics](#) (Center for Global Development)
5. [Why gender matters in the impact and recovery from COVID-19](#) (The Interpreter)